

TRANSPORT FINDINGS

Treating COVID with Bike Lanes: Design, Spatial, and Network Analysis of 'Pop-Up' Bike Lanes in Paris

Marcel E. Moran¹ ¹ City and Regional Planning, University of California, Berkeley

Keywords: Cycling, GIS, Bike Lanes, Infrastructure, covid-19

<https://doi.org/10.32866/001c.33765>

Findings

Paris bypassed standard-construction processes to rapidly expand its bike-lane network amidst COVID-19. This study analyses these new lanes in terms of their design, spatial footprint, and relationship to the pre-COVID network. Municipal data, street imagery, and in-person observations demonstrate that Paris's new 'pop-up' lanes are a higher share bi-directional than the pre-COVID network (49% vs. 39%), a higher share more protected (77% vs. 73%), and average a higher number of interconnections. These 47 kilometers connect the city's peripheral ring to its inner core, primarily represent new lanes as opposed to upgrades of existing lanes (66% vs. 33%), and replace both traffic lanes and on-street parking.

1. Questions

Many cities responded to the COVID-19 pandemic by erecting new bike lanes (Kraus and Koch 2021), but there has been little scrutiny of where these lanes are being installed, how they relate to pre-COVID networks, what street uses they replaced, and their design characteristics (such as their level of physical protection and bi-directionality). This study pursues these questions in the context of Paris, France, a city currently in the midst of a large-scale transformation of its streets (Sisson 2020). Indeed, Mayor Anne Hidalgo champions the '15-minute city' ('ville du quart d'heure'), a vision wherein Parisians can reach a range of destinations (school, work, leisure, groceries, etc.) quickly, safely, and sustainably (O'Sullivan 2020).

This analytical approach moves past evaluating bike lanes purely in terms of length (e.g. '100 KM of new lanes'), and adds design, spatial, and network context. These features are relevant because prior research indicates that protected bike lanes (compared to those only painted) both reduce collisions and increase cycling (Marshall and Ferencsik 2019; Monsere et al. 2014), and that connectivity – to what extent different bike lanes intersect – plays a crucial role in their overall attractiveness to riders (Furth, Mekuria, and Nixon 2016). Furthermore, bike lanes that are bi-directional provide double the benefit to cyclists, though that attribute is often not reflected in network evaluations.

2. Methods

Paris's municipal government maintains an open-data website, which includes a file covering its varied bicycle infrastructure installed between 2005 and February, 2020 ("Réseau des Itinéraires Cyclables" 2021). This, in combination with another dataset on its COVID-19 pop-up bike lanes ("Pistes Cyclables Temporaires" 2021) delineates the following six categories (see [Figure 1](#)):

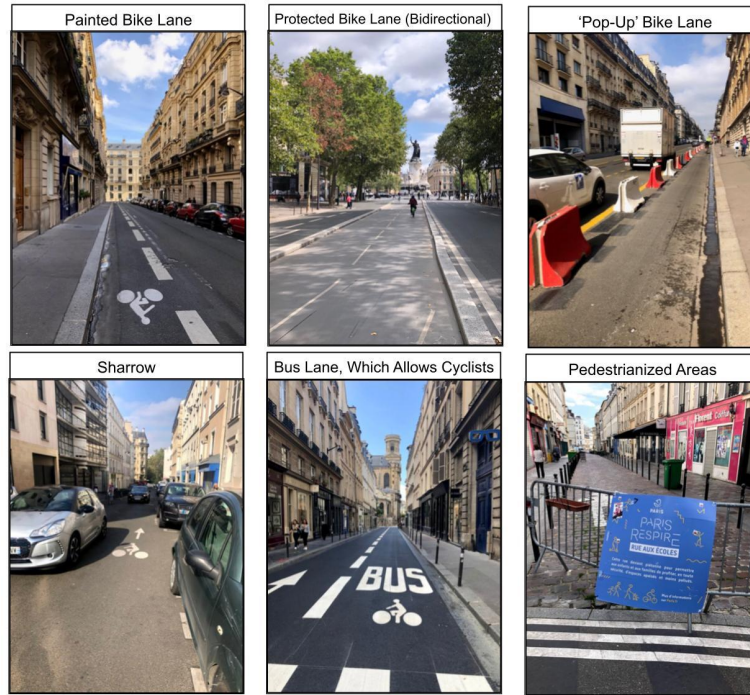


Figure 1. Categories of bike infrastructure in Paris.

Sharrows, Marked Bus Lanes, and Pedestrianized Areas (bottom row) are excluded from the analyses that follow. All photos by the author.

-
- Painted Bike Lanes;
 - Protected Bike Lanes (including separated bike paths);
 - 'Pop-Up' Bike Lanes (those installed quickly with staggered concrete blocks and plastic posts in response to COVID-19);
 - Sharrows (painted bike icons in mixed traffic lanes);
 - Pedestrianized Areas (streets with fencing and signage which prohibit automobiles); and
 - Bus Lanes, which also allow cyclists.

Three categories of bike infrastructure in Paris were excluded from the following analyses: 1) bus lanes which also allow cyclists, 2) sharrows, and 3) pedestrianized areas. The reason for these exclusions stems from on-the-ground observations over months of use. First, the bus lanes that allow cyclists generally provide little improvement over normal traffic lanes, both because bus service is frequent and that taxis are also allowed use of such lanes. This results in cycling conditions with little separation from vehicles. Sharrows and pedestrianized areas are left out because the former provides exceedingly little benefit to cyclists, and because pedestrianized areas in Paris are both very often impossible for cyclists to use (due to heavy pedestrian traffic) and also are often temporally restricted, in that many hours of the day they are not closed to car traffic. This step narrows the data to painted lanes, protected lanes, and pandemic-specific pop-up lanes, an important filtering of Paris's bike

infrastructure that is missing from nearly all municipal, academic, and media reports. Of these three remaining categories of bicycle infrastructure in Paris, the painted lanes provide the least safety and comfort for cyclists (given there is no physical barrier separating them from traffic), followed by pop-up lanes (most of which use a combination of concrete blocks and plastic posts to form a barrier), and lastly the standard protected lanes, which include continuous separation from traffic with in-ground concrete slabs.

Data on these lanes not only include their location, length, and category, but also the year in which each lane segment was installed (for 74% of the entire pre-COVID network), as well as whether or not each is bidirectional. The bi-directionality attribute was missing from the pop-up lanes, and added manually based on in-person observation and review of images from Google Street View. Google's database of images also enabled the determination of what street use (on-street parking or traffic lane) preceded each pop-up lane. Every bike lane was also evaluated as to how many other bike lanes it connects to (or intersects with) *at the time each segment was installed*. This allows for a temporally-specific connectivity measure, which generates a picture of how network connectivity has changed longitudinally.

More broadly, the process of analyzing bicycle lanes both by year of installation and category is applicable to other cities where records are available. It is essential for researchers to combine these datasets with local knowledge; bike lanes vary in quality (and naming conventions), and removing types like sharrows ensures more accurate representations of a network in total. Indeed, this study in part draws inspiration from work by Firth and colleagues (2021), who mapped bike lanes in Vancouver, British Columbia, over time.

3. Findings

From 2005 to the close of 2020, Paris installed 503 kilometers of bike lanes, with the majority coming in the form of protected lanes (332 kilometers, 66%), followed by painted lanes (124 kilometers, 25%), and pop-up lanes, in 2020 (47 kilometers, 9%). Mapping the expansion of bike lanes in Paris over four discrete time periods (2005-2009, 2010-2014, 2015-2019, and 2020) demonstrates temporal patterns, and puts the lanes erected quickly as a pandemic response into spatial context (see [Figure 2](#)). Fifteen years of bike lanes proceeded with the construction of a ring of lanes surrounding Paris's periphery, followed by additional, shorter lanes clustered in western arrondissements (districts), major east to west bike lanes (including along the Seine River), and, due to COVID-19, long bike-lane corridors that provide cyclists routes from the city's periphery to its inner core (and vice versa).

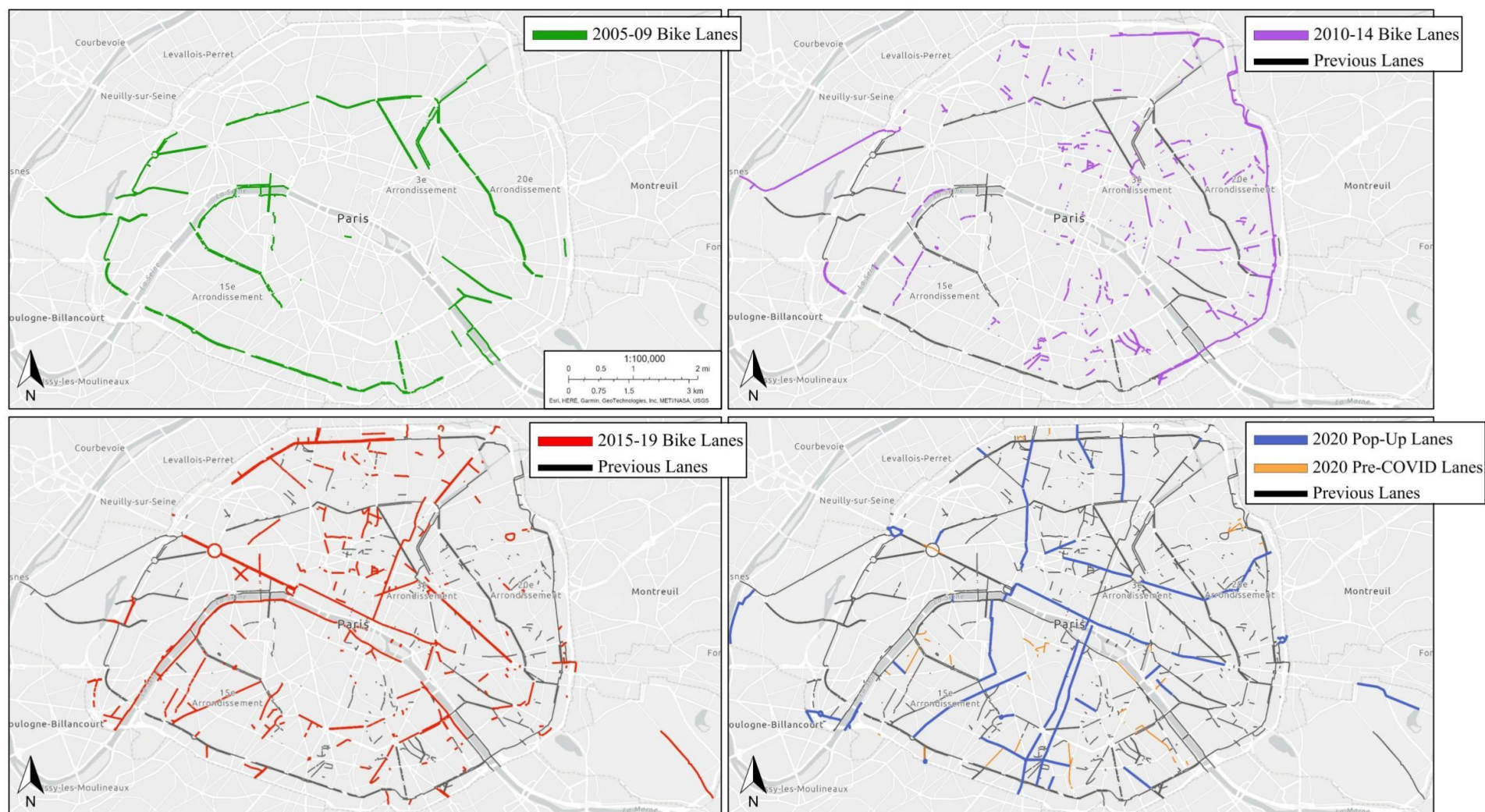


Figure 2. Spatial expansion of bike lanes in Paris (2005-2020).

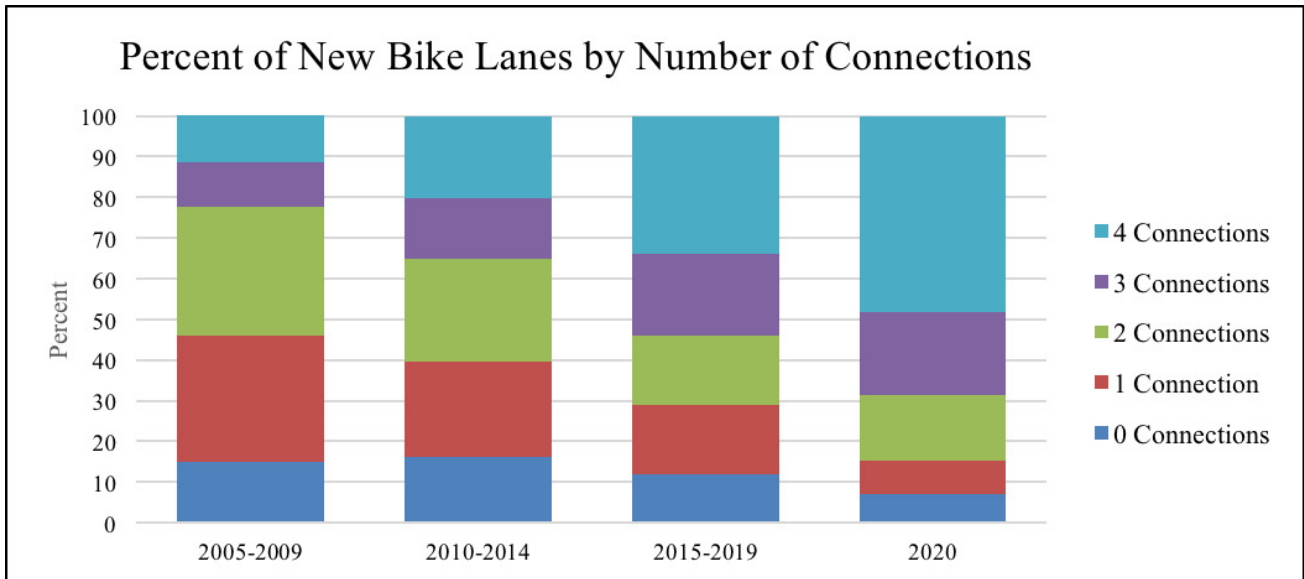


Figure 3. Longitudinal changes in bike-lane connectivity within Paris. The number of connections for each lane was analyzed the year in which it was installed (based on the existing network at that point in time).

Beyond the spatial footprint, the pop-up lanes (known locally as ‘coronapistes’) are a higher share bi-directional than the pre-COVID network (49% vs. 39%), and a higher share protected (as opposed to painted) than the pre-COVID network (77% vs. 73%). Specifically, starting in the Spring of 2020, Paris deployed a combination of plastic posts and staggered blocks (which could be installed in a matter of hours), as opposed to in-ground concrete slabs which require heavy construction. This was favored by Mayor Hidalgo in order to ensure as many were installed by the end of France’s national COVID lockdown (Alderman 2020). The pop-up lanes are also interconnected to a greater extent; approximately 58% connect with four other bike lanes, whereas only 23% of the pre-COVID network featured four connections. As [Figure 3](#) illustrates, the pop-up bike lanes continued the long-term trend of increasing connectivity over time.

Review of historical street imagery and in-person observation of these pop-up lanes determined that two thirds (31 km) were installed where no other bike lanes were previously present, whereas one third (16 km) replaced existing, painted lanes. Scrutiny of historical street imagery also allowed for documenting what other street uses were replaced to build these pop-up lanes in 2020. Roughly half replaced traffic lanes, whereas one third replaced on-street parking (a remaining 18% made no change to the street layout).

Overall, this study indicates that Paris’s transport-planning response to COVID-19 lead to bike lanes which are more physically protected, bi-directional, and interconnected than the pre-COVID network. These pop-up lanes fill important spatial gaps between the city’s developed peripheral ring of bike lanes and its inner core of tourist, commercial, and civic destinations. Accelerating the rollout of these lanes and using alternative-barrier materials

did not sacrifice design, spatial, or network characteristics in comparison to pre-pandemic lanes. This lead to a system which provides more protection, comfort, and route choices to riders. It also serves as an example of how other cities can rapidly re-allocate street space to more sustainable travel, and/or speed the installation of existing bike plans rather than proceeding via a more incremental and delayed approach. Future research should consider if and how Paris will make such pop-up lanes permanent, how these facilities are influencing rider volume and demographics, if the growth of cycling infrastructure is paired with expanded bike parking, and the ways in which such lanes complement and connect with transit stations.

Submitted: February 22, 2022 AEDT, Accepted: March 20, 2022 AEDT



This is an open-access article distributed under the terms of the Creative Commons Attribution 4.0 International License (CCBY-SA-4.0). View this license's legal deed at <https://creativecommons.org/licenses/by-sa/4.0> and legal code at <https://creativecommons.org/licenses/by-sa/4.0/legalcode> for more information.

REFERENCES

- Alderman, Liz. 2020. “‘Corona Cycleways’ Become the New Post-Confinement Commute.” *The New York Times*, June 12, 2020, sec. Business. <https://www.nytimes.com/2020/06/12/business/paris-bicycles-commute-coronavirus.html>.
- Firth, Caislin L., Kate Hosford, and Meghan Winters. 2021. “Who Were These Bike Lanes Built for? Social-Spatial Inequities in Vancouver’s Bikeways, 2001–2016.” *Journal of Transport Geography* 94 (June): 103122. <https://doi.org/10.1016/j.jtrangeo.2021.103122>.
- Furth, Peter G., Maaza C. Mekuria, and Hilary Nixon. 2016. “Network Connectivity for Low-Stress Bicycling.” *Transportation Research Record: Journal of the Transportation Research Board* 2587 (1): 41–49. <https://doi.org/10.3141/2587-06>.
- Kraus, Sebastian, and Nicolas Koch. 2021. “Provisional COVID-19 Infrastructure Induces Large, Rapid Increases in Cycling.” *Proceedings of the National Academy of Sciences* 118 (15). <https://doi.org/10.1073/pnas.2024399118>.
- Marshall, Wesley E., and Nicholas N. Ferenchak. 2019. “Why Cities with High Bicycling Rates Are Safer for All Road Users.” *Journal of Transport & Health* 13 (June): 100539. <https://doi.org/10.1016/j.jth.2019.03.004>.
- Monsere, Christopher, Jennifer Dill, Nathan McNeil, Kelly Clifton, Nick Foster, Tara Goddard, Matthew Berkow, et al. 2014. “Lessons from the Green Lanes: Evaluating Protected Bike Lanes in the U.S.” NITC-RR-583. Portland, OR: National Institute for Transportation and Communities. <https://doi.org/10.15760/trec.115>.
- O’Sullivan, Feargus. 2020. “Paris Mayor: It’s Time for a 15-Minute City.” *CityLab*, February 18, 2020. <https://www.bloomberg.com/news/articles/2020-02-18/paris-mayor-pledges-a-greener-15-minute-city>.
- “Pistes Cyclables Temporaires.” 2021. Paris Data. <https://opendata.paris.fr/explore/dataset/deconfinement-pistes-cyclables-temporaires/map/?disjunctive.type&disjunctive.statut&disjunctive.complement&basemap=jawg.dark&location=12,48.86109,2.34>
- “Réseau des Itinéraires Cyclables.” 2021. Paris Data. https://opendata.paris.fr/explore/dataset/reseau-cyclable/table/?disjunctive.typologie_simple&disjunctive.bidirectionnel&disjunctive.statut&disjunctive.sens_velo&disjunctive
- Sisson, Patrick. 2020. “How Paris Became a Cycling Success Story—and Built a Roadmap for Other Cities.” *Curbed* (blog). January 31, 2020. <https://archive.curbed.com/2020/1/15/21065343/bike-paris-cycling-a>.