

## Supplemental Material 1

### *Further details of analyses*

Segmented regression is a common technique for interrupted time series analyses, a method of analysing time series data to capture sudden step-changes at a single time-point, in addition to underlying trends/slopes and changes therein (Bernal et al., 2017). The ability to detect and distinguish between step-changes and changes to trends associated with policy implementation, while controlling for underlying trends and confounding events, mean they are increasingly deployed to evaluate policy interventions and other events (Bernal et al., 2017).

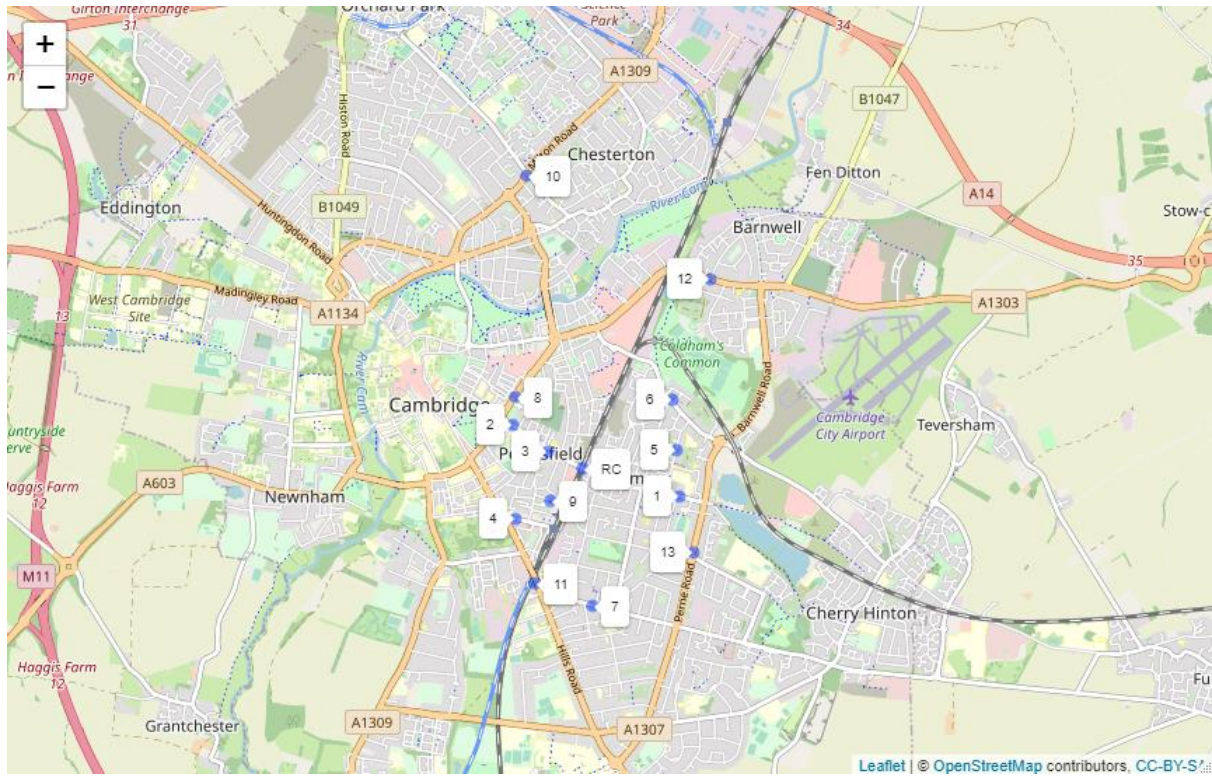
Using daily total counts of pedestrians, cyclists and motor vehicles from 13 sensors, we estimated a segmented quasi-Poisson regression model for each location. The outcomes were counts that displayed overdispersion, meaning that Poisson regression was not appropriate. Negative binomial regression was considered but with no clear rationale for choosing between quasi-Poisson and negative binomial based on the variance to mean relationship, we proceeded with quasi-Poisson analyses. Sensitivity analyses conducted using negative binomial regression resulted in very similar findings to the main analyses (Supplemental Figure 7).

The daily total reported cases of coronavirus and the daily reported deaths attributable to coronavirus in England were included in the model. A step change was modelled for the initial lockdown (24 March 2020), in addition to a change to the underlying slope and a quadratic term to reflect the non-linear nature of the subsequent increase in traffic. A step change for the full re-opening of schools was incorporated from 1 September 2020 onwards. Analyses also took account of 2019 school summer (26 July-3 September) and Christmas (19 December-5 January) holidays, day of the week, rainfall (tertiles), temperature (quintiles) and daylight hours (continuous). Mill Road, where sensors 1 and 2 were located, was closed to private motor vehicles from 24 June 2020 onwards, as a result of measures to ensure social distancing. In addition, this road was closed for a period in the summer of 2019 for unrelated maintenance work. These closures were adjusted for at all locations to account for reductions on directly affected routes and displaced traffic on alternative routes. A change in the trend was also incorporated at the second closure of Mill Road. Short periods of missing outcome data were adjusted for in analyses. In addition, temperature data was missing for 25 September 2020, therefore the mean of the days either side was used. Estimates from time-series regression are presented in Supplemental Table 2.

The dates selected for inclusion in the model were, where possible, based on announcements of policy by the UK Government. However, we decided which policy changes to incorporate, and how, in part based on the data. Models were tested for goodness of fit using AIC and BIC statistics, for example, to establish whether the change in slope following the lockdown was a non-linear function of time.

Plots of deviance residuals against time, correlograms and partial correlograms suggested the presence of autocorrelation. This indicates an incomplete adjustment for trends in the data, which is not surprising given the series of events that took place within the study period, in addition to the potential limitations of relying on meteorological data to control for seasonal trends (Schwartz et al., 1996). Analyses were conducted with lagged residual terms with 1-, 2-, 7- or 14- day lags, separately or in combination, as indicated by correlograms for each analysis (each outcome at each sensor) (Bhaskaran et al., 2013; Katsouyanni et al., 1996).

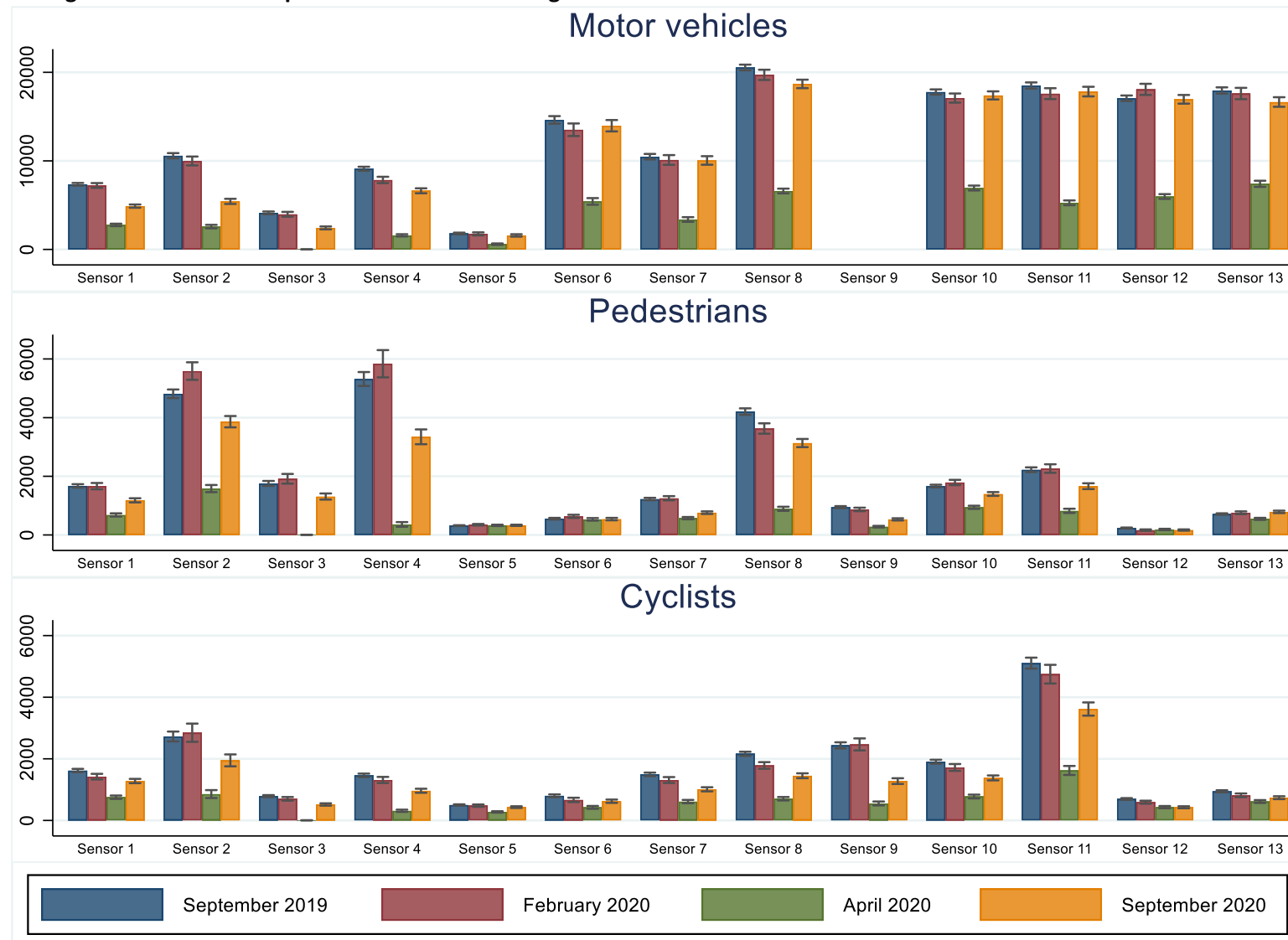
**Supplemental Figure 1: Location of traffic sensors and road closure in central Cambridge**



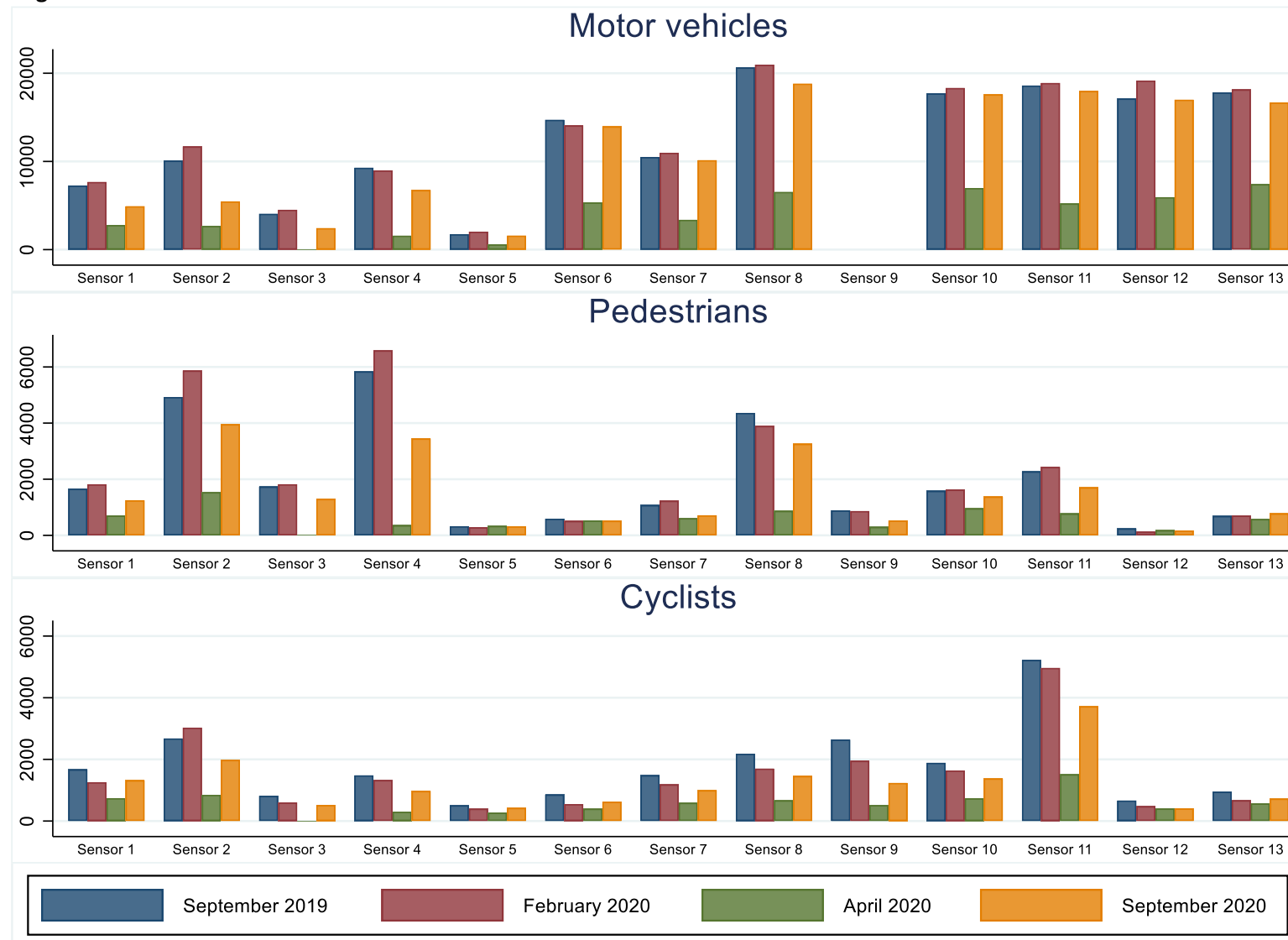
RC = Road closure location

©OpenStreetMap contributed, CC-BY-SA

**Supplemental Figure 2: Seasonally adjusted predicted counts of motor vehicles, pedestrians and cyclists at 13 locations in central Cambridge before, during and after the initial phase of restrictions in England from March 2020**



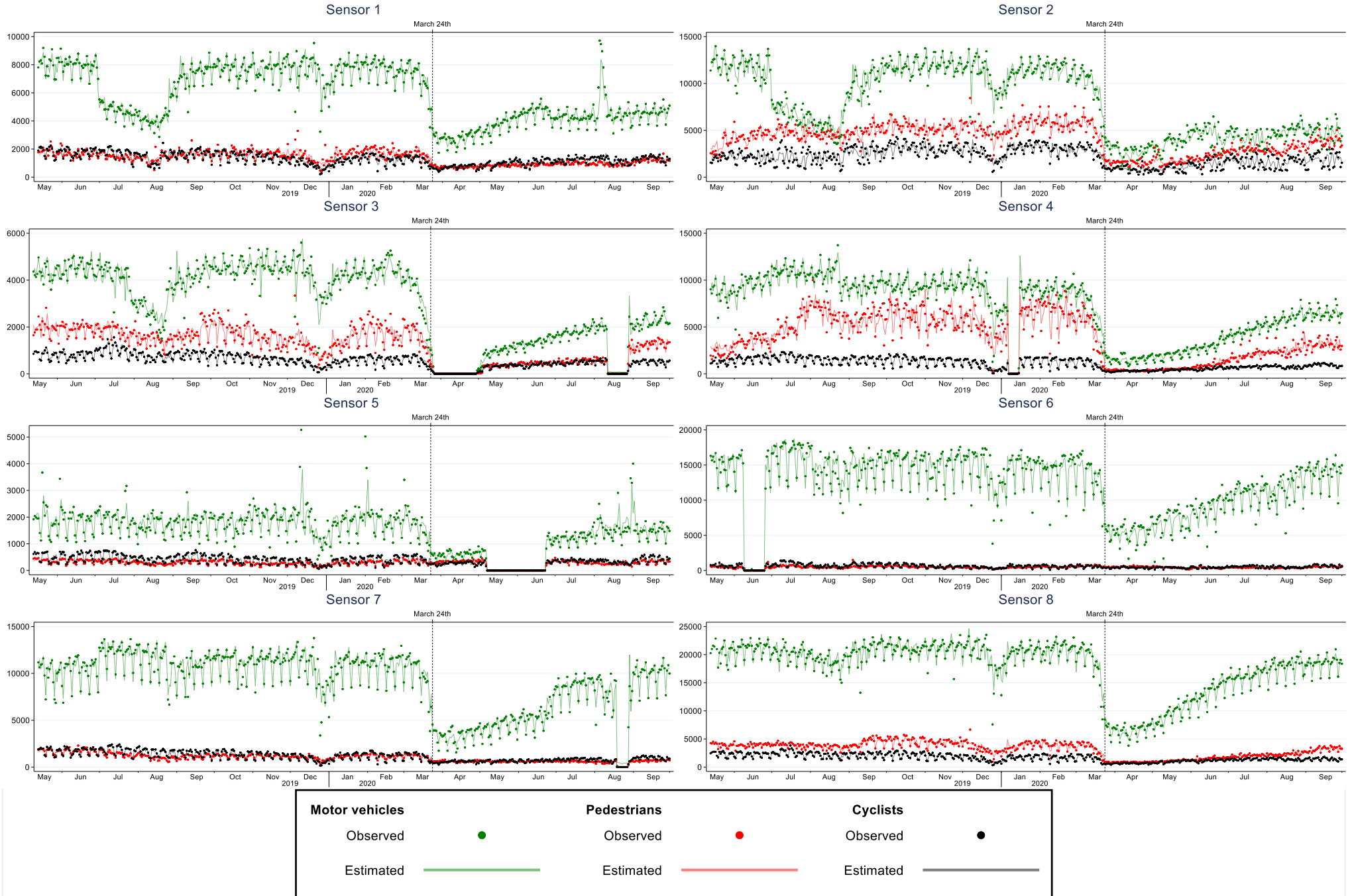
**Supplemental Figure 3: Raw observed counts of motor vehicles, pedestrians and cyclists before, during and after the initial phase of restrictions in England from March 2020**



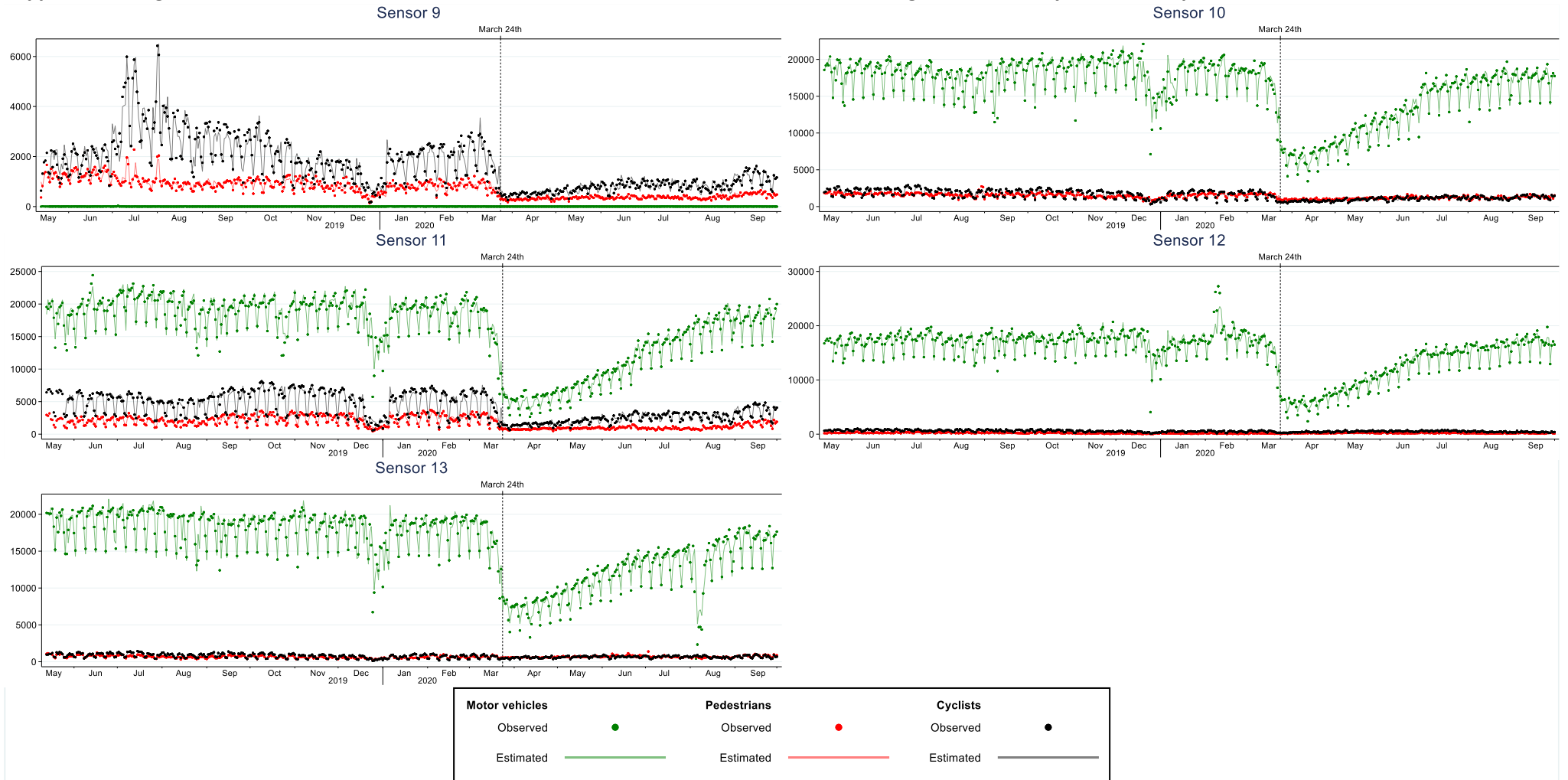
Supplemental Figure 4: Percentage changes in raw observed motor, pedestrian and cyclist traffic between the September 2019 baselines and September 2020



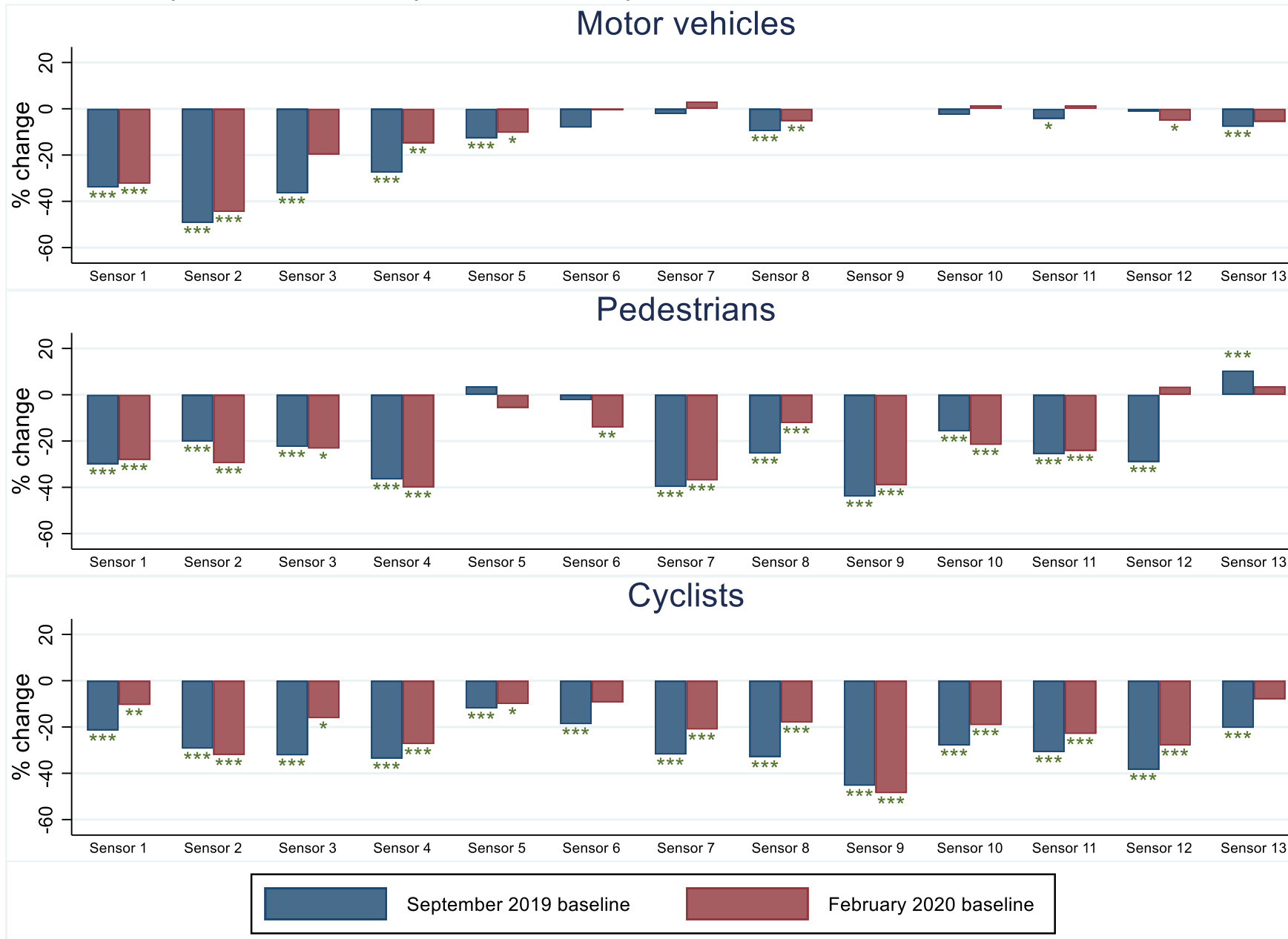
**Supplemental Figure 5: Observed and estimated time series data for 8 sensors in central Cambridge between May 2019 and September 2020**



**Supplemental Figure 6: Observed and estimated time series data for 5 sensors in central Cambridge between May 2019 and September 2020**



Supplemental Figure 7: Sensitivity analyses using negative binomial regression to estimate seasonally adjusted percentage changes in motor, pedestrian and cyclist traffic between September 2019 and February 2020 baselines and September 2020



\*  $P < 0.05$ ; \*\*  $P < 0.01$ ; \*\*\*  $P < 0.001$ . P-values are from pairwise comparisons between each baseline (September 2019 and February 2020) and September 2020



**Supplemental Table 1: Estimated marginal means and 95% confidence interval for September 2019, February 2020, April 2020 and September 2020 based on time-series models**

	September 2019	February 2020	April 2020	September 2020
<b>Motor Vehicles</b>				
Sensor 1	7355 (7204 to 7507)	7224 (6956 to 7493)	2770 (2632 to 2908)	4894 (4712 to 5075)
Sensor 2	10583 (10288 to 10879)	9987 (9486 to 10489)	2580 (2381 to 2780)	5428 (5139 to 5717)
Sensor 3	4135 (3982 to 4287)	3973 (3702 to 4244)	11 (6 to 16)	2432 (2266 to 2597)
Sensor 4	9112 (8890 to 9334)	7846 (7487 to 8204)	1594 (1467 to 1722)	6626 (6347 to 6905)
Sensor 5	1804 (1709 to 1899)	1758 (1588 to 1928)	598 (517 to 679)	1582 (1447 to 1717)
Sensor 6	14627 (14200 to 15055)	13516 (12807 to 14225)	5423 (5048 to 5798)	13972 (13332 to 14612)
Sensor 7	10473 (10162 to 10785)	10106 (9557 to 10656)	3384 (3122 to 3645)	10047 (9563 to 10530)
Sensor 8	20546 (20224 to 20868)	19714 (19136 to 20291)	6600 (6333 to 6867)	18689 (18212 to 19166)
Sensor 9	-	-	-	-
Sensor 10	17779 (17487 to 18072)	17092 (16576 to 17608)	6935 (6659 to 7211)	17393 (16931 to 17854)
Sensor 11	18509 (18160 to 18858)	17589 (16974 to 18203)	5265 (4994 to 5537)	17828 (17285 to 18371)
Sensor 12	17072 (16762 to 17383)	18075 (17450 to 18700)	5977 (5705 to 6249)	16952 (16462 to 17442)
Sensor 13	17945 (17590 to 18300)	17606 (16965 to 18248)	7414 (7067 to 7760)	16647 (16105 to 17188)
<b>Pedestrians</b>				
Sensor 1	1672 (1614 to 1730)	1664 (1556 to 1771)	682 (627 to 737)	1180 (1109 to 1251)
Sensor 2	4813 (4667 to 4959)	5588 (5288 to 5887)	1581 (1459 to 1703)	3862 (3669 to 4055)
Sensor 3	1756 (1673 to 1840)	1915 (1750 to 2080)	4 (1 to 6)	1310 (1206 to 1415)
Sensor 4	5317 (5081 to 5554)	5838 (5373 to 6302)	359 (280 to 438)	3346 (3093 to 3600)
Sensor 5	319 (306 to 331)	348 (323 to 374)	327 (305 to 350)	329 (308 to 350)
Sensor 6	554 (526 to 582)	635 (581 to 688)	531 (487 to 575)	541 (499 to 582)
Sensor 7	1225 (1184 to 1265)	1251 (1180 to 1323)	573 (533 to 612)	760 (715 to 804)
Sensor 8	4206 (4096 to 4316)	3628 (3451 to 3805)	892 (822 to 963)	3133 (2994 to 3272)
Sensor 9	947 (911 to 983)	870 (810 to 929)	283 (256 to 310)	531 (494 to 568)
Sensor 10	1667 (1622 to 1712)	1789 (1700 to 1878)	943 (890 to 997)	1398 (1333 to 1462)
Sensor 11	2225 (2145 to 2305)	2264 (2119 to 2409)	822 (750 to 893)	1663 (1563 to 1763)
Sensor 12	236 (220 to 253)	165 (141 to 189)	185 (160 to 209)	169 (147 to 190)
Sensor 13	714 (690 to 737)	756 (709 to 803)	549 (515 to 583)	787 (745 to 828)
<b>Cyclists</b>				
Sensor 1	1621 (1568 to 1673)	1421 (1330 to 1512)	753 (699 to 808)	1279 (1209 to 1349)
Sensor 2	2725 (2566 to 2885)	2848 (2552 to 3143)	856 (728 to 984)	1950 (1756 to 2144)
Sensor 3	789 (755 to 822)	702 (643 to 760)	4 (2 to 6)	517 (480 to 555)
Sensor 4	1464 (1407 to 1521)	1314 (1215 to 1412)	313 (277 to 350)	963 (898 to 1029)
Sensor 5	502 (482 to 522)	481 (444 to 517)	275 (253 to 298)	433 (405 to 460)
Sensor 6	801 (756 to 846)	666 (596 to 737)	424 (377 to 471)	623 (569 to 678)
Sensor 7	1495 (1439 to 1551)	1312 (1216 to 1408)	612 (559 to 666)	1010 (944 to 1077)
Sensor 8	2163 (2097 to 2230)	1784 (1676 to 1893)	704 (649 to 760)	1451 (1372 to 1530)
Sensor 9	2437 (2338 to 2537)	2467 (2273 to 2662)	551 (487 to 614)	1276 (1183 to 1369)
Sensor 10	1906 (1842 to 1970)	1720 (1610 to 1831)	776 (715 to 838)	1380 (1300 to 1461)
Sensor 11	5106 (4928 to 5284)	4748 (4445 to 5051)	1623 (1477 to 1768)	3616 (3402 to 3830)
Sensor 12	697 (668 to 725)	593 (545 to 640)	431 (396 to 467)	428 (396 to 460)
Sensor 13	945 (910 to 980)	815 (755 to 876)	614 (568 to 660)	738 (691 to 785)

**Supplemental Table 2: Time-series regression estimates and estimated changes in travel between May 2019 and September 2020**

	Motor Vehicles		Cyclists		Pedestrians	
	IRR (95% CI)	Estimated change (95% CI)	IRR (95% CI)	Estimated change (95% CI)	IRR (95% CI)	Estimated change (95% CI)
<b>Sensor 1</b>						
Trend	0.00 (0.00 to 0.00)	-3 (-4 to -2)	0.00 (0.00 to 0.00)	-1 (-2 to -1)	0.00 (0.00 to 0.00)	-1 (-1 to 0)
Road closure 2019	-0.45 (-0.49 to -0.41)	-2651 (-2885 to -2418)	-0.09 (-0.15 to -0.04)	-121 (-189 to -52)	-0.14 (-0.20 to -0.08)	-194 (-275 to -112)
School holidays	-0.19 (-0.23 to -0.15)	-1133 (-1375 to -890)	-0.17 (-0.23 to -0.12)	-219 (-289 to -149)	-0.11 (-0.17 to -0.04)	-142 (-226 to -58)
Road closed to all 2019	-0.01 (-0.11 to 0.10)	-31 (-637 to 575)	0.01 (-0.12 to 0.14)	13 (-148 to 175)	-0.02 (-0.17 to 0.13)	-24 (-224 to 176)
Christmas 2020	-0.15 (-0.19 to -0.10)	-861 (-1116 to -607)	-0.66 (-0.76 to -0.56)	-846 (-971 to -721)	-0.52 (-0.60 to -0.43)	-698 (-813 to -583)
Road closure 2020	-0.16 (-0.23 to -0.10)	-968 (-1361 to -575)	0.04 (-0.06 to 0.14)	50 (-74 to 174)	0.06 (-0.06 to 0.18)	82 (-75 to 240)
Road closure 2020 slope	0.00 (-0.01 to 0.01)	-1 (-35 to 33)	0.00 (-0.01 to 0.01)	2 (-8 to 13)	0.00 (-0.01 to 0.01)	-5 (-18 to 9)
Restrictions (March 2020)	-0.77 (-0.89 to -0.65)	-4528 (-5245 to -3811)	-0.72 (-0.92 to -0.53)	-929 (-1181 to -677)	-0.63 (-0.82 to -0.44)	-848 (-1105 to -591)
Post-restrictions slope	0.01 (0.01 to 0.01)	50 (30 to 69)	0.01 (0.01 to 0.02)	15 (8 to 21)	0.00 (0.00 to 0.01)	2 (-5 to 10)
Post-restrictions slope <sup>2</sup>	0.00 (0.00 to 0.00)	0 (0 to 0)	0.00 (0.00 to 0.00)	0 (0 to 0)	0.00 (0.00 to 0.00)	0 (0 to 0)
September 2020	-0.02 (-0.11 to 0.07)	-116 (-642 to 411)	0.18 (0.05 to 0.31)	233 (71 to 396)	0.13 (-0.01 to 0.28)	181 (-20 to 382)
Covid cases (per 1000)	0.03 (-0.04 to 0.10)	178 (-211 to 567)	0.04 (-0.05 to 0.14)	54 (-67 to 175)	0.02 (-0.09 to 0.13)	26 (-121 to 172)
Covid deaths (per 10,000)	-0.08 (-0.12 to -0.04)	-474 (-719 to -229)	-0.03 (-0.09 to 0.02)	-45 (-121 to 32)	-0.06 (-0.13 to 0.01)	-81 (-173 to 10)
Rainfall (low)	ref	ref	ref	ref	ref	ref
Rainfall (2)	0.02 (0.00 to 0.03)	90 (-24 to 203)	-0.06 (-0.09 to -0.03)	-76 (-117 to -35)	-0.07 (-0.10 to -0.03)	-93 (-139 to -48)
Rainfall (high)	0.03 (0.01 to 0.05)	167 (32 to 303)	-0.21 (-0.25 to -0.17)	-261 (-307 to -214)	-0.18 (-0.22 to -0.14)	-236 (-287 to -184)
Temperature (low)	-0.02 (-0.05 to 0.02)	-91 (-290 to 109)	-0.13 (-0.19 to -0.07)	-162 (-232 to -93)	-0.05 (-0.11 to 0.01)	-62 (-139 to 16)
Temperature (2)	0.02 (-0.01 to 0.05)	97 (-74 to 267)	-0.09 (-0.14 to -0.04)	-114 (-174 to -54)	0.01 (-0.04 to 0.06)	20 (-48 to 87)
Temperature (3)	ref	ref	ref	ref	ref	ref
Temperature (4)	0.00 (-0.02 to 0.03)	26 (-128 to 179)	0.08 (0.04 to 0.12)	111 (59 to 163)	0.03 (-0.02 to 0.07)	36 (-24 to 95)
Temperature (high)	0.07 (0.03 to 0.12)	454 (168 to 740)	0.13 (0.07 to 0.20)	188 (95 to 280)	-0.05 (-0.13 to 0.03)	-66 (-166 to 34)
Daylight (hours)	-0.01 (-0.02 to -0.01)	-79 (-114 to -44)	0.00 (-0.01 to 0.01)	3 (-10 to 16)	-0.02 (-0.03 to -0.01)	-20 (-34 to -7)
Sunday	-0.18 (-0.21 to -0.15)	-972 (-1139 to -804)	-0.32 (-0.37 to -0.27)	-376 (-433 to -319)	-0.20 (-0.25 to -0.14)	-243 (-307 to -179)
Monday	-0.03 (-0.06 to 0.00)	-200 (-372 to -28)	-0.03 (-0.08 to 0.01)	-42 (-103 to 19)	-0.02 (-0.07 to 0.02)	-34 (-100 to 33)
Tuesday	ref	ref	ref	ref	ref	ref
Wednesday	0.01 (-0.02 to 0.03)	35 (-139 to 208)	0.01 (-0.04 to 0.05)	8 (-53 to 69)	-0.03 (-0.07 to 0.02)	-34 (-100 to 32)
Thursday	0.01 (-0.02 to 0.04)	84 (-92 to 260)	0.00 (-0.05 to 0.04)	-6 (-68 to 55)	0.02 (-0.03 to 0.07)	28 (-40 to 96)
Friday	0.09 (0.06 to 0.12)	567 (388 to 747)	-0.01 (-0.05 to 0.04)	-10 (-72 to 52)	0.12 (0.07 to 0.16)	170 (100 to 240)
Saturday	-0.02 (-0.05 to 0.01)	-112 (-286 to 62)	-0.17 (-0.22 to -0.12)	-216 (-275 to -157)	-0.04 (-0.08 to 0.01)	-47 (-114 to 19)
Lagged residuals L1	0.01 (0.01 to 0.01)	45 (40 to 51)	0.01 (0.01 to 0.01)	15 (12 to 18)	0.00 (0.00 to 0.01)	6 (3 to 10)
Lagged residuals L2					0.00 (0.00 to 0.01)	6 (2 to 9)
Lagged residuals L7			0.00 (0.00 to 0.01)	5 (2 to 8)		
_cons	9.19 (9.09 to 9.29)		7.63 (7.46 to 7.79)		7.78 (7.61 to 7.94)	

	Motor Vehicles		Cyclists		Pedestrians	
	IRR (95% CI)	Estimated change (95% CI)	IRR (95% CI)	Estimated change (95% CI)	IRR (95% CI)	Estimated change (95% CI)
<b>Sensor2</b>						
Trend	0.00 (0.00 to 0.00)	-8 (-10 to -6)	0.00 (0.00 to 0.00)	1 (-1 to 2)	0.00 (0.00 to 0.00)	3 (2 to 4)
Road closure 2019	-0.42 (-0.47 to -0.37)	-3309 (-3725 to -2893)	-0.10 (-0.21 to 0.00)	-217 (-443 to 8)	0.11 (0.06 to 0.16)	434 (227 to 642)
School holidays	-0.27 (-0.32 to -0.21)	-2115 (-2553 to -1678)	-0.01 (-0.12 to 0.09)	-30 (-256 to 195)	-0.10 (-0.15 to -0.05)	-406 (-615 to -197)
Road closed to all 2019	0.06 (-0.07 to 0.20)	495 (-565 to 1554)	0.05 (-0.21 to 0.31)	104 (-453 to 661)	-0.05 (-0.17 to 0.08)	-190 (-688 to 307)
Christmas 2020	-0.23 (-0.29 to -0.17)	-1828 (-2278 to -1378)	-0.63 (-0.76 to -0.49)	-1343 (-1634 to -1051)	-0.29 (-0.36 to -0.23)	-1182 (-1435 to -929)
Road closure 2020	-0.31 (-0.41 to -0.20)	-2418 (-3237 to -1599)	0.14 (-0.05 to 0.33)	298 (-112 to 709)	0.23 (0.13 to 0.33)	927 (507 to 1347)
Road closure 2020 slope	-0.01 (-0.02 to 0.00)	-53 (-126 to 19)	-0.03 (-0.05 to -0.02)	-70 (-107 to -33)	-0.01 (-0.02 to -0.01)	-58 (-94 to -21)
Restrictions (March 2020)	-0.74 (-0.91 to -0.57)	-5853 (-7203 to -4503)	-0.97 (-1.32 to -0.62)	-2070 (-2824 to -1317)	-0.99 (-1.18 to -0.80)	-3981 (-4732 to -3230)
Post-restrictions slope	0.00 (-0.01 to 0.00)	-5 (-45 to 36)	-0.01 (-0.02 to 0.00)	-18 (-40 to 3)	-0.01 (-0.01 to 0.00)	-25 (-46 to -4)
Post-restrictions slope <sup>2</sup>	0.00 (0.00 to 0.00)	0 (0 to 1)	0.00 (0.00 to 0.00)	0 (0 to 1)	0.00 (0.00 to 0.00)	0 (0 to 1)
September 2020	-0.11 (-0.25 to 0.02)	-895 (-1946 to 156)	-0.18 (-0.42 to 0.07)	-377 (-897 to 143)	-0.01 (-0.13 to 0.12)	-29 (-526 to 468)
Covid cases (per 1000)	-0.15 (-0.26 to -0.05)	-1227 (-2026 to -428)	-0.17 (-0.35 to 0.02)	-361 (-755 to 32)	-0.10 (-0.19 to 0.00)	-383 (-759 to -6)
Covid deaths (per 10,000)	-0.04 (-0.10 to 0.02)	-317 (-823 to 189)	0.04 (-0.08 to 0.16)	92 (-163 to 348)	0.00 (-0.06 to 0.06)	9 (-239 to 257)
Rainfall (low)	ref	ref	ref	ref	ref	ref
Rainfall (2)	0.03 (0.00 to 0.06)	231 (27 to 435)	0.00 (-0.06 to 0.05)	-10 (-128 to 109)	-0.01 (-0.04 to 0.02)	-46 (-159 to 67)
Rainfall (high)	0.05 (0.02 to 0.08)	369 (127 to 611)	-0.15 (-0.22 to -0.09)	-316 (-449 to -183)	-0.10 (-0.13 to -0.07)	-387 (-517 to -257)
Temperature (low)	0.06 (0.02 to 0.11)	512 (141 to 882)	-0.09 (-0.19 to 0.01)	-190 (-397 to 17)	-0.08 (-0.13 to -0.03)	-300 (-499 to -101)
Temperature (2)	0.07 (0.03 to 0.11)	589 (270 to 908)	0.00 (-0.09 to 0.08)	-3 (-192 to 186)	-0.01 (-0.06 to 0.03)	-45 (-225 to 135)
Temperature (3)	ref	ref	ref	ref	ref	ref
Temperature (4)	-0.05 (-0.09 to -0.02)	-406 (-678 to -133)	0.00 (-0.07 to 0.07)	3 (-158 to 164)	0.05 (0.01 to 0.08)	191 (36 to 347)
Temperature (high)	-0.11 (-0.18 to -0.04)	-824 (-1305 to -344)	-0.38 (-0.52 to -0.24)	-701 (-930 to -471)	-0.10 (-0.16 to -0.03)	-373 (-628 to -119)
Daylight (hours)	-0.02 (-0.02 to -0.01)	-126 (-187 to -65)	-0.04 (-0.06 to -0.03)	-95 (-130 to -60)	-0.03 (-0.04 to -0.02)	-111 (-145 to -77)
Sunday	-0.06 (-0.10 to -0.02)	-444 (-751 to -137)	-0.16 (-0.25 to -0.08)	-325 (-493 to -156)	-0.03 (-0.07 to 0.01)	-116 (-281 to 49)
Monday	-0.03 (-0.07 to 0.01)	-244 (-552 to 63)	0.00 (-0.08 to 0.08)	6 (-169 to 181)	0.01 (-0.03 to 0.06)	55 (-111 to 220)
Tuesday	ref	ref	ref	ref	ref	ref
Wednesday	0.01 (-0.03 to 0.04)	39 (-269 to 348)	0.03 (-0.05 to 0.11)	57 (-119 to 232)	0.01 (-0.03 to 0.05)	49 (-116 to 214)
Thursday	0.03 (-0.01 to 0.07)	265 (-49 to 578)	0.05 (-0.03 to 0.13)	104 (-75 to 283)	0.00 (-0.05 to 0.04)	-9 (-176 to 157)
Friday	0.12 (0.08 to 0.16)	963 (642 to 1284)	0.07 (-0.01 to 0.15)	150 (-30 to 330)	0.09 (0.05 to 0.13)	368 (196 to 539)
Saturday	0.06 (0.02 to 0.10)	501 (185 to 818)	-0.03 (-0.11 to 0.05)	-67 (-241 to 107)	0.17 (0.13 to 0.21)	710 (537 to 884)
Lagged residuals L1	0.01 (0.01 to 0.01)	52 (43 to 60)	0.01 (0.01 to 0.01)	25 (21 to 29)	0.01 (0.01 to 0.01)	38 (33 to 42)
Lagged residuals L2	0.00 (0.00 to 0.00)	-12 (-20 to -3)	-0.01 (-0.01 to -0.01)	-15 (-19 to -11)		
_cons	9.61 (9.48 to 9.74)		8.47 (8.20 to 8.74)		8.72 (8.59 to 8.86)	

	Motor Vehicles		Cyclists		Pedestrians	
	IRR (95% CI)	Estimated change (95% CI)	IRR (95% CI)	Estimated change (95% CI)	IRR (95% CI)	Estimated change (95% CI)
<b>Sensor 3</b>						
Trend	0.00 (0.00 to 0.00)	-3 (-4 to -2)	0.00 (0.00 to 0.00)	0 (-1 to 0)	0.00 (0.00 to 0.00)	0 (0 to 1)
Road closure 2019	-0.06 (-0.12 to 0.00)	-186 (-370 to -3)	0.11 (0.05 to 0.18)	62 (27 to 97)	-0.04 (-0.12 to 0.04)	-48 (-140 to 44)
School holidays	-0.34 (-0.40 to -0.27)	-1010 (-1205 to -815)	-0.19 (-0.26 to -0.12)	-104 (-139 to -68)	-0.19 (-0.27 to -0.11)	-230 (-326 to -134)
Road closed to all 2019	-0.03 (-0.18 to 0.12)	-98 (-550 to 354)	0.18 (0.05 to 0.32)	98 (25 to 172)	0.12 (-0.06 to 0.29)	140 (-70 to 350)
Christmas 2020	-0.29 (-0.37 to -0.21)	-868 (-1102 to -634)	-0.78 (-0.91 to -0.65)	-423 (-494 to -352)	-0.67 (-0.80 to -0.54)	-809 (-965 to -653)
Road closure 2020	0.01 (-0.15 to 0.18)	39 (-448 to 526)	-0.02 (-0.18 to 0.13)	-12 (-95 to 71)	-0.24 (-0.47 to 0.00)	-286 (-568 to -4)
Road closure 2020 slope	0.02 (0.01 to 0.04)	71 (22 to 120)	0.02 (0.01 to 0.04)	13 (4 to 21)	0.01 (-0.01 to 0.03)	13 (-14 to 41)
Restrictions (March 2020)	-0.47 (-0.90 to -0.05)	-1418 (-2683 to -153)	-0.79 (-1.27 to -0.32)	-430 (-689 to -172)	-0.70 (-1.23 to -0.18)	-849 (-1486 to -212)
Post-restrictions slope	0.01 (0.00 to 0.02)	34 (3 to 66)	0.02 (0.01 to 0.03)	11 (5 to 17)	-0.01 (-0.02 to 0.00)	-11 (-28 to 6)
Post-restrictions slope <sup>2</sup>	0.00 (0.00 to 0.00)	0 (-1 to 0)	0.00 (0.00 to 0.00)	0 (0 to 0)	0.00 (0.00 to 0.00)	0 (0 to 0)
September 2020	0.22 (-0.02 to 0.46)	666 (-53 to 1384)	0.27 (0.00 to 0.53)	144 (2 to 286)	0.10 (-0.19 to 0.38)	116 (-230 to 462)
Covid cases (per 1000)	0.24 (0.07 to 0.41)	712 (196 to 1229)	0.23 (0.05 to 0.41)	124 (25 to 223)	-0.08 (-0.29 to 0.14)	-91 (-355 to 172)
Covid deaths (per 10,000)	-0.60 (-0.79 to -0.41)	-1804 (-2370 to -1238)	-0.40 (-0.59 to -0.21)	-218 (-321 to -115)	-0.36 (-0.61 to -0.11)	-430 (-732 to -129)
Rainfall (low)	ref	ref	ref	ref	ref	ref
Rainfall (2)	0.03 (0.00 to 0.07)	101 (-3 to 205)	-0.04 (-0.08 to 0.00)	-21 (-43 to 2)	-0.03 (-0.07 to 0.02)	-31 (-87 to 24)
Rainfall (high)	0.05 (0.01 to 0.09)	144 (20 to 268)	-0.17 (-0.22 to -0.12)	-92 (-118 to -66)	-0.10 (-0.16 to -0.05)	-123 (-187 to -59)
Temperature (low)	0.01 (-0.05 to 0.08)	36 (-151 to 223)	-0.16 (-0.23 to -0.08)	-80 (-120 to -40)	-0.03 (-0.11 to 0.05)	-36 (-135 to 63)
Temperature (2)	0.02 (-0.03 to 0.08)	65 (-98 to 228)	-0.08 (-0.15 to -0.02)	-45 (-81 to -9)	0.00 (-0.07 to 0.07)	5 (-82 to 91)
Temperature (3)	ref	ref	ref	ref	ref	ref
Temperature (4)	0.01 (-0.04 to 0.06)	33 (-109 to 176)	0.07 (0.02 to 0.12)	43 (13 to 72)	0.00 (-0.06 to 0.06)	-3 (-77 to 71)
Temperature (high)	0.07 (-0.01 to 0.16)	223 (-40 to 485)	0.09 (0.00 to 0.17)	52 (1 to 103)	-0.14 (-0.25 to -0.03)	-158 (-280 to -37)
Daylight (hours)	-0.02 (-0.03 to -0.01)	-68 (-100 to -37)	0.01 (0.00 to 0.02)	5 (-2 to 12)	0.02 (0.01 to 0.04)	30 (13 to 47)
Sunday	-0.04 (-0.10 to 0.01)	-116 (-272 to 40)	-0.48 (-0.55 to -0.41)	-228 (-260 to -197)	-0.36 (-0.44 to -0.29)	-390 (-470 to -310)
Monday	0.01 (-0.04 to 0.06)	26 (-130 to 182)	-0.05 (-0.11 to 0.01)	-28 (-62 to 7)	0.00 (-0.07 to 0.07)	3 (-84 to 89)
Tuesday	ref	ref	ref	ref	ref	ref
Wednesday	0.02 (-0.04 to 0.07)	47 (-109 to 203)	0.01 (-0.04 to 0.07)	9 (-26 to 44)	-0.04 (-0.11 to 0.03)	-51 (-136 to 34)
Thursday	0.06 (0.01 to 0.12)	187 (26 to 347)	0.03 (-0.03 to 0.08)	15 (-20 to 51)	-0.02 (-0.09 to 0.05)	-25 (-112 to 62)
Friday	0.15 (0.09 to 0.20)	451 (287 to 615)	0.00 (-0.06 to 0.06)	-1 (-36 to 35)	0.01 (-0.06 to 0.07)	7 (-81 to 95)
Saturday	0.04 (-0.01 to 0.10)	125 (-33 to 284)	-0.28 (-0.34 to -0.21)	-145 (-178 to -112)	-0.08 (-0.15 to -0.01)	-94 (-180 to -9)
Lagged residuals L1	0.01 (0.01 to 0.01)	31 (26 to 36)	0.02 (0.01 to 0.02)	10 (8 to 13)	0.01 (0.01 to 0.01)	15 (12 to 18)
Lagged residuals L7			0.01 (0.00 to 0.01)	4 (2 to 7)		
missing	-3.02 (-3.43 to -2.61)	-9022 (-10255 to -7790)	-3.24 (-3.68 to -2.79)	-1761 (-2003 to -1519)	-3.42 (-4.03 to -2.81)	-4129 (-4872 to -3386)
_cons	8.74 (8.56 to 8.91)		6.74 (6.52 to 6.96)		7.27 (7.04 to 7.50)	

	Motor Vehicles		Cyclists		Pedestrians	
	IRR (95% CI)	Estimated change (95% CI)	IRR (95% CI)	Estimated change (95% CI)	IRR (95% CI)	Estimated change (95% CI)
<b>Sensor 4</b>						
Trend	0.00 (0.00 to 0.00)	-9 (-10 to -7)	0.00 (0.00 to 0.00)	-1 (-2 to -1)	0.00 (0.00 to 0.00)	3 (1 to 4)
Road closure 2019	0.21 (0.17 to 0.25)	1481 (1212 to 1750)	0.10 (0.04 to 0.16)	103 (39 to 167)	0.28 (0.21 to 0.35)	1060 (779 to 1341)
School holidays	-0.02 (-0.05 to 0.02)	-108 (-377 to 160)	-0.09 (-0.15 to -0.03)	-99 (-163 to -34)	0.21 (0.14 to 0.28)	783 (518 to 1049)
Road closed to all 2019	-0.02 (-0.10 to 0.07)	-118 (-732 to 496)	0.12 (-0.02 to 0.25)	122 (-17 to 260)	0.02 (-0.14 to 0.18)	60 (-546 to 666)
Christmas 2020	-0.34 (-0.40 to -0.29)	-2417 (-2805 to -2029)	-0.96 (-1.08 to -0.84)	-1012 (-1143 to -882)	-0.65 (-0.75 to -0.55)	-2458 (-2836 to -2081)
Road closure 2020	0.27 (0.17 to 0.37)	1913 (1232 to 2594)	0.17 (0.03 to 0.32)	182 (29 to 336)	0.47 (0.25 to 0.69)	1779 (936 to 2621)
Road closure 2020 slope	0.00 (-0.01 to 0.01)	-7 (-67 to 53)	0.00 (-0.02 to 0.01)	-4 (-17 to 10)	0.00 (-0.02 to 0.02)	-2 (-75 to 71)
Restrictions (March 2020)	-1.18 (-1.38 to -0.98)	-8319 (-9710 to -6928)	-1.24 (-1.57 to -0.91)	-1305 (-1655 to -956)	-1.81 (-2.30 to -1.31)	-6866 (-8754 to -4977)
Post-restrictions slope	0.00 (0.00 to 0.01)	32 (-3 to 68)	0.01 (0.00 to 0.02)	9 (1 to 18)	0.00 (-0.01 to 0.01)	6 (-38 to 51)
Post-restrictions slope <sup>2</sup>	0.00 (0.00 to 0.00)	0 (0 to 0)	0.00 (0.00 to 0.00)	0 (0 to 0)	0.00 (0.00 to 0.00)	0 (0 to 1)
September 2020	-0.04 (-0.15 to 0.06)	-314 (-1029 to 400)	0.24 (0.07 to 0.41)	252 (70 to 434)	-0.12 (-0.32 to 0.09)	-445 (-1217 to 327)
Covid cases (per 1000)	-0.11 (-0.19 to -0.03)	-789 (-1362 to -217)	-0.08 (-0.21 to 0.05)	-84 (-226 to 57)	-0.11 (-0.28 to 0.06)	-415 (-1063 to 234)
Covid deaths (per 10,000)	-0.04 (-0.10 to 0.02)	-264 (-676 to 148)	-0.02 (-0.11 to 0.07)	-23 (-119 to 74)	-0.17 (-0.31 to -0.02)	-627 (-1161 to -93)
Rainfall (low)	ref	ref	ref	ref	ref	ref
Rainfall (2)	0.01 (-0.01 to 0.04)	98 (-62 to 257)	0.00 (-0.04 to 0.03)	-5 (-45 to 35)	0.00 (-0.04 to 0.04)	-13 (-172 to 147)
Rainfall (high)	0.04 (0.01 to 0.06)	263 (72 to 454)	-0.14 (-0.19 to -0.10)	-144 (-189 to -98)	-0.12 (-0.17 to -0.07)	-449 (-629 to -269)
Temperature (low)	-0.05 (-0.09 to 0.00)	-328 (-621 to -34)	-0.08 (-0.15 to -0.01)	-77 (-149 to -6)	-0.18 (-0.26 to -0.10)	-672 (-957 to -386)
Temperature (2)	-0.01 (-0.04 to 0.03)	-52 (-308 to 204)	-0.06 (-0.13 to 0.00)	-66 (-129 to -4)	-0.11 (-0.18 to -0.04)	-436 (-702 to -170)
Temperature (3)	ref	ref	ref	ref	ref	ref
Temperature (4)	0.00 (-0.03 to 0.03)	13 (-196 to 222)	0.07 (0.02 to 0.11)	72 (20 to 124)	0.05 (0.00 to 0.11)	226 (-15 to 466)
Temperature (high)	0.01 (-0.04 to 0.06)	64 (-295 to 423)	0.03 (-0.05 to 0.11)	32 (-55 to 118)	0.04 (-0.05 to 0.14)	181 (-223 to 584)
Daylight (hours)	-0.04 (-0.04 to -0.03)	-263 (-314 to -212)	-0.02 (-0.03 to -0.01)	-23 (-36 to -11)	-0.08 (-0.10 to -0.07)	-320 (-370 to -271)
Sunday	-0.12 (-0.15 to -0.08)	-757 (-993 to -520)	-0.52 (-0.58 to -0.46)	-476 (-532 to -420)	-0.23 (-0.30 to -0.16)	-763 (-991 to -535)
Monday	-0.02 (-0.05 to 0.02)	-131 (-371 to 109)	-0.04 (-0.09 to 0.02)	-42 (-104 to 20)	0.01 (-0.05 to 0.07)	41 (-197 to 279)
Tuesday	ref	ref	ref	ref	ref	ref
Wednesday	0.02 (-0.01 to 0.06)	170 (-74 to 413)	0.00 (-0.05 to 0.06)	4 (-58 to 66)	0.05 (-0.02 to 0.11)	182 (-60 to 423)
Thursday	0.05 (0.02 to 0.09)	364 (117 to 611)	0.01 (-0.05 to 0.06)	7 (-56 to 70)	0.02 (-0.05 to 0.08)	59 (-182 to 300)
Friday	0.13 (0.10 to 0.16)	971 (718 to 1224)	0.00 (-0.06 to 0.05)	-2 (-65 to 62)	0.10 (0.03 to 0.16)	382 (135 to 630)
Saturday	0.01 (-0.02 to 0.05)	98 (-147 to 343)	-0.34 (-0.40 to -0.28)	-341 (-400 to -283)	0.10 (0.04 to 0.16)	399 (152 to 645)
Lagged residuals L1	0.01 (0.01 to 0.01)	48 (41 to 55)	0.01 (0.01 to 0.02)	13 (11 to 16)	0.01 (0.01 to 0.01)	35 (31 to 40)
Lagged residuals L7			0.01 (0.01 to 0.01)	11 (8 to 14)		
missing	-4.88 (-5.59 to -4.16)	-34411 (-39454 to -29368)	-5.58 (-7.26 to -3.90)	-5878 (-7653 to -4103)	-6.20 (-8.36 to -4.04)	-23562 (-31771 to -15352)
_cons	9.74 (9.62 to 9.86)		7.85 (7.66 to 8.05)		9.49 (9.28 to 9.70)	

	Motor Vehicles		Cyclists		Pedestrians	
	IRR (95% CI)	Estimated change (95% CI)	IRR (95% CI)	Estimated change (95% CI)	IRR (95% CI)	Estimated change (95% CI)
<b>Sensor 5</b>						
Trend	0.00 (0.00 to 0.00)	-1 (-2 to 0)	0.00 (0.00 to 0.00)	0 (0 to 0)	0.00 (0.00 to 0.00)	0 (0 to 0)
Road closure 2019	0.11 (0.03 to 0.20)	167 (39 to 296)	0.01 (-0.06 to 0.07)	3 (-20 to 25)	-0.02 (-0.08 to 0.05)	-4 (-22 to 14)
School holidays	-0.09 (-0.17 to 0.00)	-128 (-258 to 2)	-0.22 (-0.29 to -0.16)	-81 (-105 to -57)	-0.30 (-0.37 to -0.23)	-82 (-101 to -62)
Road closed to all 2019	-0.09 (-0.30 to 0.11)	-134 (-437 to 168)	0.04 (-0.10 to 0.18)	14 (-37 to 64)	0.08 (-0.07 to 0.23)	21 (-20 to 63)
Christmas 2020	-0.47 (-0.60 to -0.35)	-700 (-882 to -518)	-0.72 (-0.84 to -0.60)	-261 (-304 to -218)	-0.35 (-0.45 to -0.24)	-94 (-122 to -66)
Road closure 2020	-0.17 (-0.99 to 0.65)	-255 (-1464 to 954)	0.84 (0.30 to 1.39)	305 (107 to 503)	0.10 (-0.36 to 0.55)	26 (-98 to 151)
Road closure 2020 slope	-0.01 (-0.04 to 0.02)	-13 (-54 to 27)	0.02 (0.00 to 0.05)	9 (2 to 16)	0.00 (-0.02 to 0.02)	1 (-5 to 6)
Restrictions (March 2020)	-0.95 (-1.29 to -0.61)	-1403 (-1905 to -901)	-0.70 (-0.91 to -0.49)	-252 (-329 to -176)	-0.21 (-0.38 to -0.05)	-57 (-102 to -12)
Post-restrictions slope	0.00 (-0.01 to 0.01)	5 (-10 to 20)	0.01 (0.00 to 0.01)	2 (-1 to 4)	0.00 (0.00 to 0.01)	1 (-1 to 2)
Post-restrictions slope <sup>2</sup>	0.00 (0.00 to 0.00)	0 (0 to 0)	0.00 (0.00 to 0.00)	0 (0 to 0)	0.00 (0.00 to 0.00)	0 (0 to 0)
September 2020	-0.27 (-0.47 to -0.07)	-397 (-697 to -97)	0.49 (0.32 to 0.67)	179 (116 to 242)	0.36 (0.19 to 0.52)	97 (51 to 142)
Covid cases (per 1000)	-0.26 (-0.44 to -0.08)	-379 (-645 to -113)	0.17 (0.02 to 0.31)	60 (9 to 112)	0.17 (0.03 to 0.30)	45 (9 to 80)
Covid deaths (per 10,000)	0.08 (-0.03 to 0.19)	118 (-51 to 287)	-0.06 (-0.14 to 0.02)	-22 (-52 to 7)	-0.06 (-0.13 to 0.01)	-16 (-36 to 3)
Rainfall (low)	ref	ref	ref	ref	ref	ref
Rainfall (2)	0.00 (-0.05 to 0.05)	0 (-72 to 73)	-0.02 (-0.06 to 0.01)	-9 (-23 to 5)	0.01 (-0.03 to 0.05)	3 (-7 to 13)
Rainfall (high)	-0.03 (-0.09 to 0.03)	-41 (-125 to 43)	-0.17 (-0.21 to -0.12)	-59 (-74 to -43)	-0.03 (-0.08 to 0.01)	-9 (-21 to 3)
Temperature (low)	0.00 (-0.09 to 0.09)	-5 (-139 to 129)	-0.10 (-0.17 to -0.03)	-36 (-61 to -11)	-0.05 (-0.12 to 0.02)	-13 (-31 to 5)
Temperature (2)	0.03 (-0.05 to 0.10)	38 (-81 to 157)	-0.07 (-0.13 to -0.01)	-26 (-48 to -4)	0.00 (-0.05 to 0.06)	1 (-14 to 16)
Temperature (3)	ref	ref	ref	ref	ref	ref
Temperature (4)	-0.03 (-0.10 to 0.03)	-46 (-143 to 50)	0.05 (0.00 to 0.10)	20 (2 to 39)	0.05 (0.00 to 0.10)	14 (0 to 28)
Temperature (high)	-0.01 (-0.11 to 0.10)	-14 (-168 to 141)	0.03 (-0.05 to 0.10)	9 (-20 to 39)	-0.08 (-0.16 to 0.00)	-21 (-42 to -1)
Daylight (hours)	-0.02 (-0.04 to -0.01)	-35 (-57 to -13)	0.03 (0.02 to 0.04)	11 (7 to 15)	0.04 (0.03 to 0.06)	12 (9 to 15)
Sunday	-0.43 (-0.51 to -0.35)	-557 (-660 to -454)	-0.55 (-0.62 to -0.49)	-174 (-194 to -155)	-0.37 (-0.42 to -0.31)	-90 (-104 to -75)
Monday	-0.04 (-0.11 to 0.03)	-59 (-170 to 53)	-0.02 (-0.07 to 0.03)	-8 (-30 to 13)	0.01 (-0.04 to 0.06)	3 (-13 to 19)
Tuesday	ref	ref	ref	ref	ref	ref
Wednesday	-0.03 (-0.10 to 0.04)	-44 (-156 to 67)	-0.01 (-0.06 to 0.05)	-2 (-24 to 19)	-0.01 (-0.06 to 0.04)	-3 (-18 to 13)
Thursday	0.04 (-0.03 to 0.11)	58 (-57 to 173)	0.00 (-0.05 to 0.06)	2 (-20 to 24)	-0.01 (-0.06 to 0.05)	-2 (-18 to 14)
Friday	0.06 (-0.01 to 0.13)	101 (-15 to 217)	-0.01 (-0.07 to 0.04)	-5 (-27 to 17)	0.00 (-0.05 to 0.06)	1 (-15 to 17)
Saturday	-0.21 (-0.29 to -0.14)	-305 (-413 to -197)	-0.44 (-0.50 to -0.38)	-146 (-166 to -127)	-0.25 (-0.30 to -0.19)	-64 (-79 to -49)
Lagged residuals L1	0.01 (0.01 to 0.01)	14 (12 to 17)	0.02 (0.02 to 0.03)	8 (7 to 10)	0.02 (0.02 to 0.03)	5 (4 to 7)
Lagged residuals L7			0.01 (0.00 to 0.01)	3 (2 to 5)		
missing	-23.00 (-7868.13 to 7822.14)	-33981 (-11626735 to 11558774)	-21.96 (-3852.20 to 3808.27)	-7954 (-1394976 to 1379069)	-21.63 (-2218.79 to 2175.52)	-5874 (-602440 to 590692)
_cons	7.98 (7.74 to 8.23)		5.96 (5.76 to 6.15)		5.19 (5.00 to 5.39)	

	Motor Vehicles		Cyclists		Pedestrians	
	IRR (95% CI)	Estimated change (95% CI)	IRR (95% CI)	Estimated change (95% CI)	IRR (95% CI)	Estimated change (95% CI)
<b>Sensor 6</b>						
Trend	0.00 (0.00 to 0.00)	-7 (-10 to -4)	0.00 (0.00 to 0.00)	0 (-1 to 0)	0.00 (0.00 to 0.00)	1 (0 to 1)
Road closure 2019	0.12 (0.07 to 0.17)	1435 (845 to 2025)	0.14 (0.05 to 0.23)	78 (27 to 129)	0.07 (-0.01 to 0.16)	34 (-6 to 73)
School holidays	-0.10 (-0.15 to -0.06)	-1250 (-1824 to -677)	-0.29 (-0.37 to -0.20)	-161 (-209 to -112)	-0.29 (-0.38 to -0.21)	-133 (-173 to -94)
Road closed to all 2019	0.04 (-0.07 to 0.14)	438 (-846 to 1721)	0.20 (0.03 to 0.38)	115 (18 to 211)	0.05 (-0.13 to 0.24)	25 (-59 to 108)
Christmas 2020	-0.21 (-0.27 to -0.15)	-2581 (-3341 to -1822)	-0.62 (-0.77 to -0.46)	-346 (-432 to -260)	-0.44 (-0.57 to -0.32)	-201 (-258 to -144)
Road closure 2020	0.12 (0.03 to 0.21)	1465 (393 to 2536)	0.37 (0.20 to 0.53)	206 (113 to 299)	0.20 (0.05 to 0.34)	90 (24 to 156)
Road closure 2020 slope	-0.01 (-0.01 to 0.00)	-77 (-171 to 17)	0.00 (-0.01 to 0.02)	2 (-6 to 10)	0.01 (0.00 to 0.02)	5 (-1 to 10)
Restrictions (March 2020)	-0.74 (-0.91 to -0.58)	-9027 (-11047 to -7006)	-0.45 (-0.72 to -0.18)	-252 (-404 to -99)	-0.33 (-0.53 to -0.13)	-151 (-240 to -61)
Post-restrictions slope	0.00 (0.00 to 0.01)	36 (-19 to 91)	0.00 (-0.01 to 0.01)	1 (-4 to 5)	-0.01 (-0.01 to 0.00)	-3 (-5 to 0)
Post-restrictions slope <sup>2</sup>	0.00 (0.00 to 0.00)	0 (0 to 1)	0.00 (0.00 to 0.00)	0 (0 to 0)	0.00 (0.00 to 0.00)	0 (0 to 0)
September 2020	0.08 (-0.02 to 0.19)	991 (-278 to 2260)	0.39 (0.18 to 0.60)	219 (102 to 335)	0.24 (0.06 to 0.42)	109 (26 to 192)
Covid cases (per 1000)	-0.07 (-0.15 to 0.01)	-797 (-1769 to 175)	0.02 (-0.13 to 0.17)	12 (-74 to 98)	0.11 (-0.02 to 0.24)	49 (-9 to 107)
Covid deaths (per 10,000)	-0.02 (-0.07 to 0.04)	-197 (-845 to 450)	-0.02 (-0.11 to 0.07)	-12 (-64 to 41)	-0.01 (-0.09 to 0.06)	-5 (-40 to 29)
Rainfall (low)	ref	ref	ref	ref	ref	ref
Rainfall (2)	0.00 (-0.02 to 0.03)	55 (-265 to 374)	-0.03 (-0.08 to 0.02)	-16 (-45 to 13)	0.02 (-0.02 to 0.07)	11 (-10 to 31)
Rainfall (high)	0.01 (-0.02 to 0.04)	142 (-250 to 533)	-0.18 (-0.25 to -0.12)	-99 (-133 to -65)	-0.06 (-0.12 to -0.01)	-29 (-53 to -4)
Temperature (low)	-0.02 (-0.07 to 0.03)	-216 (-807 to 375)	-0.17 (-0.27 to -0.07)	-92 (-144 to -40)	-0.10 (-0.18 to -0.02)	-46 (-80 to -11)
Temperature (2)	0.00 (-0.04 to 0.04)	-20 (-524 to 485)	-0.11 (-0.19 to -0.02)	-59 (-104 to -14)	0.01 (-0.06 to 0.07)	3 (-26 to 33)
Temperature (3)	ref	ref	ref	ref	ref	ref
Temperature (4)	-0.01 (-0.05 to 0.02)	-181 (-593 to 230)	0.07 (0.00 to 0.13)	40 (1 to 78)	0.06 (0.00 to 0.12)	28 (0 to 56)
Temperature (high)	-0.04 (-0.10 to 0.02)	-467 (-1169 to 234)	-0.09 (-0.20 to 0.03)	-49 (-110 to 12)	-0.22 (-0.33 to -0.11)	-92 (-135 to -50)
Daylight (hours)	-0.01 (-0.02 to -0.01)	-172 (-278 to -66)	0.00 (-0.01 to 0.02)	3 (-7 to 13)	0.03 (0.02 to 0.05)	15 (9 to 22)
Sunday	-0.35 (-0.39 to -0.30)	-3741 (-4202 to -3281)	-0.50 (-0.58 to -0.42)	-251 (-292 to -210)	-0.17 (-0.24 to -0.10)	-71 (-101 to -42)
Monday	-0.01 (-0.05 to 0.03)	-138 (-631 to 355)	-0.03 (-0.10 to 0.04)	-20 (-65 to 26)	0.06 (-0.01 to 0.12)	28 (-3 to 59)
Tuesday	ref	ref	ref	ref	ref	ref
Wednesday	-0.01 (-0.05 to 0.03)	-103 (-594 to 388)	0.00 (-0.07 to 0.07)	-3 (-48 to 43)	0.06 (0.00 to 0.13)	29 (-2 to 60)
Thursday	0.02 (-0.02 to 0.05)	195 (-307 to 696)	-0.02 (-0.09 to 0.06)	-10 (-55 to 36)	0.04 (-0.02 to 0.11)	21 (-10 to 52)
Friday	0.05 (0.01 to 0.09)	692 (186 to 1199)	-0.08 (-0.15 to 0.00)	-47 (-92 to -2)	0.04 (-0.02 to 0.11)	20 (-11 to 51)
Saturday	-0.11 (-0.15 to -0.07)	-1338 (-1822 to -854)	-0.44 (-0.52 to -0.36)	-227 (-268 to -185)	-0.09 (-0.16 to -0.02)	-39 (-68 to -9)
Lagged residuals L1	0.00 (0.00 to 0.00)	36 (26 to 45)	0.01 (0.01 to 0.02)	7 (5 to 9)	0.02 (0.01 to 0.02)	7 (6 to 9)
Lagged residuals L2			0.01 (0.00 to 0.01)	3 (1 to 5)		
Lagged residuals L7			0.01 (0.00 to 0.01)	4 (2 to 6)		
missing	-6.23 (-7.42 to -5.04)	-75754 (-90235 to -61273)	-6.86 (-9.83 to -3.88)	-3852 (-5524 to -2179)	-5.70 (-7.28 to -4.11)	-2598 (-3325 to -1872)
_cons	9.91 (9.77 to 10.04)		6.77 (6.50 to 7.05)		5.67 (5.43 to 5.90)	

	Motor Vehicles		Cyclists		Pedestrians	
	IRR (95% CI)	Estimated change (95% CI)	IRR (95% CI)	Estimated change (95% CI)	IRR (95% CI)	Estimated change (95% CI)
<b>Sensor 7</b>						
Trend	0.00 (0.00 to 0.00)	-4 (-6 to -1)	0.00 (0.00 to 0.00)	-1 (-2 to -1)	0.00 (0.00 to 0.00)	-1 (-1 to -1)
Road closure 2019	0.20 (0.15 to 0.25)	1780 (1339 to 2220)	0.06 (0.00 to 0.11)	62 (-2 to 127)	-0.08 (-0.13 to -0.03)	-75 (-125 to -25)
School holidays	-0.07 (-0.11 to -0.02)	-591 (-1032 to -150)	-0.07 (-0.13 to -0.01)	-76 (-141 to -11)	-0.27 (-0.32 to -0.21)	-264 (-317 to -210)
Road closed to all 2019	-0.02 (-0.13 to 0.09)	-154 (-1152 to 845)	0.11 (-0.02 to 0.23)	118 (-22 to 257)	0.07 (-0.05 to 0.19)	69 (-47 to 185)
Christmas 2020	-0.26 (-0.32 to -0.19)	-2327 (-2918 to -1736)	-0.70 (-0.81 to -0.58)	-777 (-904 to -650)	-0.27 (-0.34 to -0.19)	-263 (-337 to -188)
Road closure 2020	0.41 (0.31 to 0.51)	3741 (2826 to 4655)	0.16 (0.03 to 0.30)	181 (30 to 333)	0.02 (-0.10 to 0.13)	19 (-96 to 133)
Road closure 2020 slope	0.01 (0.00 to 0.02)	64 (-14 to 142)	0.00 (-0.01 to 0.01)	-1 (-13 to 11)	-0.01 (-0.02 to 0.00)	-7 (-16 to 2)
Restrictions (March 2020)	-0.89 (-1.08 to -0.71)	-8083 (-9790 to -6375)	-0.95 (-1.19 to -0.70)	-1057 (-1329 to -786)	-0.58 (-0.74 to -0.41)	-572 (-733 to -410)
Post-restrictions slope	0.01 (0.01 to 0.02)	101 (54 to 149)	0.01 (0.00 to 0.01)	7 (0 to 15)	-0.01 (-0.01 to 0.00)	-5 (-10 to 0)
Post-restrictions slope <sup>2</sup>	0.00 (0.00 to 0.00)	-1 (-1 to 0)	0.00 (0.00 to 0.00)	0 (0 to 0)	0.00 (0.00 to 0.00)	0 (0 to 0)
September 2020	0.24 (0.10 to 0.37)	2134 (901 to 3367)	0.35 (0.15 to 0.54)	387 (169 to 605)	0.17 (0.00 to 0.35)	172 (0 to 344)
Covid cases (per 1000)	0.10 (0.01 to 0.20)	942 (95 to 1789)	-0.03 (-0.16 to 0.10)	-33 (-178 to 113)	0.03 (-0.08 to 0.15)	34 (-76 to 145)
Covid deaths (per 10,000)	-0.13 (-0.19 to -0.06)	-1138 (-1704 to -571)	0.04 (-0.04 to 0.12)	41 (-49 to 131)	-0.02 (-0.09 to 0.04)	-23 (-89 to 43)
Rainfall (low)	ref	ref	ref	ref	ref	ref
Rainfall (2)	0.01 (-0.01 to 0.04)	117 (-130 to 364)	-0.01 (-0.04 to 0.03)	-7 (-47 to 34)	0.03 (0.00 to 0.05)	25 (-4 to 54)
Rainfall (high)	0.02 (-0.01 to 0.06)	221 (-78 to 519)	-0.15 (-0.20 to -0.11)	-163 (-209 to -116)	-0.04 (-0.07 to 0.00)	-37 (-71 to -3)
Temperature (low)	-0.04 (-0.09 to 0.01)	-352 (-801 to 96)	-0.08 (-0.15 to -0.01)	-86 (-158 to -13)	0.08 (0.03 to 0.13)	79 (26 to 133)
Temperature (2)	0.00 (-0.04 to 0.05)	41 (-349 to 431)	-0.06 (-0.11 to 0.00)	-61 (-124 to 2)	0.07 (0.03 to 0.12)	75 (31 to 118)
Temperature (3)	ref	ref	ref	ref	ref	ref
Temperature (4)	0.00 (-0.03 to 0.04)	6 (-317 to 330)	0.07 (0.02 to 0.11)	78 (25 to 131)	-0.03 (-0.07 to 0.01)	-32 (-69 to 5)
Temperature (high)	-0.07 (-0.13 to -0.01)	-595 (-1126 to -65)	-0.04 (-0.12 to 0.04)	-43 (-128 to 42)	-0.13 (-0.20 to -0.06)	-121 (-182 to -59)
Daylight (hours)	-0.02 (-0.03 to -0.01)	-212 (-290 to -134)	0.01 (0.00 to 0.02)	8 (-5 to 21)	0.04 (0.03 to 0.05)	38 (29 to 47)
Sunday	-0.33 (-0.37 to -0.28)	-2631 (-2986 to -2276)	-0.49 (-0.55 to -0.43)	-484 (-541 to -427)	-0.32 (-0.37 to -0.27)	-289 (-331 to -246)
Monday	-0.03 (-0.07 to 0.01)	-250 (-628 to 128)	-0.01 (-0.06 to 0.04)	-15 (-78 to 48)	-0.03 (-0.07 to 0.02)	-27 (-73 to 18)
Tuesday	ref	ref	ref	ref	ref	ref
Wednesday	-0.01 (-0.05 to 0.03)	-126 (-506 to 254)	0.01 (-0.04 to 0.06)	12 (-51 to 76)	-0.02 (-0.07 to 0.02)	-23 (-68 to 22)
Thursday	0.02 (-0.02 to 0.06)	150 (-238 to 537)	0.00 (-0.06 to 0.05)	-5 (-69 to 59)	-0.01 (-0.05 to 0.04)	-6 (-52 to 40)
Friday	0.07 (0.03 to 0.11)	681 (288 to 1075)	-0.03 (-0.08 to 0.03)	-33 (-97 to 31)	0.01 (-0.03 to 0.06)	15 (-31 to 61)
Saturday	-0.09 (-0.13 to -0.05)	-802 (-1176 to -427)	-0.34 (-0.39 to -0.28)	-356 (-415 to -297)	-0.15 (-0.19 to -0.10)	-145 (-189 to -101)
Lagged residuals L1	0.00 (0.00 to 0.01)	39 (29 to 49)	0.01 (0.01 to 0.01)	12 (8 to 15)	0.02 (0.01 to 0.02)	16 (13 to 18)
Lagged residuals L7		-25709 (-29054 to -22363)	0.01 (0.00 to 0.01)	6 (3 to 10)		
missing	-2.84 (-3.21 to -2.47)		-3.09 (-3.72 to -2.47)	-3453 (-4152 to -2754)	-3.03 (-3.59 to -2.48)	-2998 (-3550 to -2446)
_cons	9.66 (9.52 to 9.81)		7.49 (7.30 to 7.68)		6.87 (6.71 to 7.02)	



	Motor Vehicles		Cyclists		Pedestrians	
	IRR (95% CI)	Estimated change (95% CI)	IRR (95% CI)	Estimated change (95% CI)	IRR (95% CI)	Estimated change (95% CI)
<b>Sensor 8</b>						
Trend	0.00 (0.00 to 0.00)	-10 (-13 to -7)	0.00 (0.00 to 0.00)	-2 (-3 to -2)	0.00 (0.00 to 0.00)	-3 (-4 to -3)
Road closure 2019	-0.02 (-0.04 to 0.01)	-307 (-773 to 159)	0.07 (0.02 to 0.12)	112 (31 to 194)	0.02 (-0.03 to 0.06)	47 (-91 to 186)
School holidays	-0.07 (-0.10 to -0.04)	-1223 (-1697 to -750)	-0.10 (-0.15 to -0.05)	-172 (-255 to -90)	-0.13 (-0.17 to -0.08)	-397 (-538 to -256)
Road closed to all 2019	-0.02 (-0.08 to 0.05)	-310 (-1417 to 796)	0.07 (-0.04 to 0.18)	121 (-60 to 302)	-0.01 (-0.12 to 0.10)	-33 (-363 to 298)
Christmas 2020	-0.19 (-0.22 to -0.15)	-3266 (-3857 to -2675)	-0.65 (-0.74 to -0.56)	-1080 (-1228 to -932)	-0.51 (-0.57 to -0.45)	-1590 (-1788 to -1393)
Road closure 2020	0.07 (0.03 to 0.12)	1321 (492 to 2150)	0.09 (-0.01 to 0.19)	152 (-14 to 318)	0.09 (-0.01 to 0.19)	288 (-24 to 600)
Road closure 2020 slope	-0.01 (-0.01 to 0.00)	-120 (-194 to -46)	0.00 (-0.01 to 0.01)	1 (-14 to 15)	-0.01 (-0.02 to 0.00)	-26 (-54 to 1)
Restrictions (March 2020)	-0.73 (-0.83 to -0.63)	-12804 (-14579 to -11028)	-0.79 (-1.00 to -0.58)	-1307 (-1653 to -961)	-1.13 (-1.33 to -0.93)	-3534 (-4161 to -2908)
Post-restrictions slope	0.00 (0.00 to 0.01)	78 (33 to 123)	0.01 (0.01 to 0.02)	18 (9 to 27)	0.00 (0.00 to 0.01)	12 (-4 to 29)
Post-restrictions slope <sup>2</sup>	0.00 (0.00 to 0.00)	0 (0 to 1)	0.00 (0.00 to 0.00)	0 (0 to 0)	0.00 (0.00 to 0.00)	0 (0 to 0)
September 2020	-0.04 (-0.09 to 0.02)	-649 (-1666 to 368)	0.09 (-0.04 to 0.22)	150 (-63 to 363)	0.03 (-0.08 to 0.14)	104 (-242 to 450)
Covid cases (per 1000)	-0.05 (-0.09 to 0.00)	-805 (-1587 to -22)	-0.01 (-0.11 to 0.09)	-16 (-178 to 146)	-0.04 (-0.13 to 0.04)	-130 (-398 to 137)
Covid deaths (per 10,000)	-0.07 (-0.10 to -0.04)	-1178 (-1710 to -647)	-0.06 (-0.12 to 0.01)	-93 (-198 to 12)	-0.04 (-0.10 to 0.02)	-132 (-320 to 55)
Rainfall (low)	ref	ref	ref	ref	ref	ref
Rainfall (2)	0.01 (0.00 to 0.03)	242 (-11 to 496)	-0.01 (-0.04 to 0.02)	-22 (-71 to 27)	-0.02 (-0.05 to 0.00)	-72 (-151 to 6)
Rainfall (high)	0.02 (0.00 to 0.04)	336 (33 to 639)	-0.16 (-0.19 to -0.12)	-252 (-308 to -195)	-0.12 (-0.15 to -0.09)	-353 (-444 to -263)
Temperature (low)	-0.04 (-0.06 to -0.01)	-613 (-1083 to -144)	-0.10 (-0.16 to -0.04)	-161 (-249 to -73)	-0.08 (-0.13 to -0.04)	-258 (-394 to -122)
Temperature (2)	0.00 (-0.02 to 0.03)	62 (-353 to 476)	-0.06 (-0.11 to -0.01)	-102 (-179 to -25)	-0.03 (-0.07 to 0.01)	-85 (-205 to 35)
Temperature (3)	ref	ref	ref	ref	ref	ref
Temperature (4)	0.01 (-0.01 to 0.03)	159 (-165 to 482)	0.06 (0.02 to 0.09)	99 (35 to 163)	0.04 (0.00 to 0.07)	121 (15 to 227)
Temperature (high)	0.01 (-0.02 to 0.04)	195 (-363 to 753)	-0.01 (-0.07 to 0.05)	-16 (-121 to 90)	-0.07 (-0.13 to -0.01)	-227 (-404 to -51)
Daylight (hours)	-0.02 (-0.02 to -0.01)	-311 (-392 to -230)	-0.02 (-0.03 to -0.01)	-27 (-42 to -11)	-0.04 (-0.05 to -0.03)	-125 (-149 to -101)
Sunday	-0.15 (-0.17 to -0.13)	-2516 (-2885 to -2148)	-0.43 (-0.48 to -0.38)	-636 (-706 to -567)	-0.21 (-0.25 to -0.17)	-593 (-706 to -480)
Monday	-0.03 (-0.05 to -0.01)	-487 (-865 to -109)	-0.03 (-0.08 to 0.01)	-60 (-136 to 16)	0.00 (-0.03 to 0.04)	10 (-108 to 129)
Tuesday	ref	ref	ref	ref	ref	ref
Wednesday	0.01 (-0.01 to 0.03)	146 (-235 to 528)	0.01 (-0.03 to 0.05)	17 (-60 to 93)	0.02 (-0.02 to 0.06)	69 (-50 to 187)
Thursday	0.03 (0.00 to 0.05)	477 (89 to 865)	0.00 (-0.04 to 0.05)	7 (-71 to 84)	-0.01 (-0.05 to 0.03)	-38 (-157 to 81)
Friday	0.07 (0.05 to 0.09)	1339 (945 to 1732)	-0.03 (-0.07 to 0.02)	-50 (-127 to 27)	0.03 (-0.01 to 0.06)	85 (-36 to 206)
Saturday	0.00 (-0.02 to 0.02)	-54 (-438 to 329)	-0.28 (-0.33 to -0.24)	-449 (-521 to -377)	0.02 (-0.02 to 0.05)	51 (-68 to 171)
Lagged residuals L1	0.00 (0.00 to 0.00)	67 (56 to 78)	0.01 (0.01 to 0.01)	17 (13 to 20)	0.01 (0.01 to 0.01)	30 (26 to 34)
Lagged residuals L7	0.00 (0.00 to 0.00)	27 (15 to 39)	0.00 (0.00 to 0.01)	8 (5 to 12)		
_cons	10.25 (10.17 to 10.32)		8.19 (8.03 to 8.34)		9.04 (8.92 to 9.17)	

	Motor Vehicles		Cyclists		Pedestrians	
	IRR (95% CI)	Estimated change (95% CI)	IRR (95% CI)	Estimated change (95% CI)	IRR (95% CI)	Estimated change (95% CI)
<b>Sensor 9</b>						
Trend	0.00 (0.00 to 0.00)	0 (0 to 0)	0.00 (0.00 to 0.00)	1 (1 to 2)	0.00 (0.00 to 0.00)	-1 (-1 to 0)
Road closure 2019	0.38 (-0.03 to 0.80)	1 (0 to 1)	0.37 (0.31 to 0.43)	609 (510 to 709)	-0.06 (-0.12 to 0.00)	-43 (-85 to -1)
School holidays	-1.41 (-1.97 to -0.84)	-2 (-3 to -1)	-0.02 (-0.08 to 0.03)	-41 (-134 to 53)	-0.12 (-0.18 to -0.06)	-88 (-131 to -45)
Road closed to all 2019	0.06 (-0.90 to 1.01)	0 (-1 to 1)	0.43 (0.33 to 0.54)	705 (531 to 878)	0.56 (0.45 to 0.67)	404 (325 to 483)
Christmas 2020	-0.94 (-1.85 to -0.02)	-1 (-3 to 0)	-0.87 (-1.00 to -0.74)	-1419 (-1634 to -1204)	-0.61 (-0.71 to -0.50)	-435 (-510 to -361)
Road closure 2020	0.76 (-0.34 to 1.86)	1 (0 to 3)	0.03 (-0.13 to 0.19)	52 (-204 to 308)	-0.09 (-0.23 to 0.06)	-64 (-168 to 40)
Road closure 2020 slope	-0.02 (-0.12 to 0.07)	0 (0 to 0)	-0.01 (-0.02 to 0.01)	-13 (-35 to 9)	-0.01 (-0.02 to 0.01)	-4 (-12 to 5)
Restrictions (March 2020)	-2.60 (-5.66 to 0.46)	-4 (-8 to 1)	-1.24 (-1.54 to -0.93)	-2020 (-2522 to -1518)	-1.08 (-1.33 to -0.84)	-776 (-951 to -602)
Post-restrictions slope	0.00 (-0.06 to 0.07)	0 (0 to 0)	0.00 (-0.01 to 0.01)	-2 (-16 to 11)	0.00 (-0.01 to 0.01)	1 (-4 to 6)
Post-restrictions slope <sup>2</sup>	0.00 (0.00 to 0.00)	0 (0 to 0)	0.00 (0.00 to 0.00)	0 (0 to 0)	0.00 (0.00 to 0.00)	0 (0 to 0)
September 2020	0.74 (-0.46 to 1.94)	1 (-1 to 3)	0.39 (0.19 to 0.59)	638 (310 to 965)	0.27 (0.09 to 0.45)	193 (62 to 325)
Covid cases (per 1000)	-0.26 (-1.24 to 0.72)	0 (-2 to 1)	-0.05 (-0.20 to 0.10)	-85 (-331 to 161)	-0.06 (-0.19 to 0.08)	-41 (-137 to 56)
Covid deaths (per 10,000)	0.09 (-0.67 to 0.86)	0 (-1 to 1)	-0.04 (-0.13 to 0.06)	-61 (-220 to 98)	0.02 (-0.06 to 0.10)	14 (-46 to 74)
Rainfall (low)	ref	ref	ref	ref	ref	ref
Rainfall (2)	-0.21 (-0.46 to 0.04)	0 (-1 to 0)	-0.01 (-0.05 to 0.03)	-20 (-85 to 44)	-0.02 (-0.05 to 0.01)	-15 (-40 to 11)
Rainfall (high)	-0.08 (-0.39 to 0.22)	0 (-1 to 0)	-0.17 (-0.21 to -0.12)	-262 (-335 to -188)	-0.13 (-0.17 to -0.09)	-90 (-120 to -61)
Temperature (low)	0.40 (-0.09 to 0.90)	1 (0 to 1)	-0.25 (-0.33 to -0.17)	-379 (-492 to -265)	0.05 (-0.01 to 0.11)	37 (-10 to 83)
Temperature (2)	0.35 (-0.07 to 0.77)	0 (0 to 1)	-0.14 (-0.20 to -0.07)	-223 (-327 to -118)	0.04 (-0.01 to 0.10)	31 (-7 to 70)
Temperature (3)	ref	ref	ref	ref	ref	ref
Temperature (4)	0.35 (0.01 to 0.70)	0 (0 to 1)	0.11 (0.06 to 0.15)	191 (101 to 281)	0.02 (-0.02 to 0.07)	16 (-17 to 48)
Temperature (high)	-0.14 (-0.80 to 0.53)	0 (-1 to 1)	-0.11 (-0.19 to -0.02)	-172 (-308 to -35)	-0.10 (-0.18 to -0.02)	-67 (-120 to -14)
Daylight (hours)	0.09 (0.01 to 0.17)	0 (0 to 0)	0.01 (0.00 to 0.02)	16 (-4 to 36)	0.03 (0.02 to 0.04)	19 (11 to 27)
Sunday	-1.25 (-1.75 to -0.75)	-1 (-2 to -1)	-0.56 (-0.63 to -0.50)	-796 (-887 to -706)	-0.32 (-0.38 to -0.26)	-210 (-248 to -173)
Monday	-0.28 (-0.65 to 0.08)	0 (-1 to 0)	-0.01 (-0.07 to 0.05)	-18 (-120 to 84)	-0.03 (-0.08 to 0.02)	-21 (-60 to 19)
Tuesday	ref	ref	ref	ref	ref	ref
Wednesday	-0.15 (-0.50 to 0.19)	0 (-1 to 0)	0.03 (-0.03 to 0.08)	50 (-53 to 152)	-0.01 (-0.06 to 0.04)	-9 (-48 to 30)
Thursday	-0.27 (-0.62 to 0.09)	0 (-1 to 0)	-0.02 (-0.07 to 0.04)	-29 (-131 to 73)	0.00 (-0.06 to 0.05)	-4 (-44 to 36)
Friday	0.02 (-0.32 to 0.36)	0 (-1 to 1)	-0.05 (-0.11 to 0.00)	-95 (-197 to 7)	-0.02 (-0.08 to 0.03)	-19 (-59 to 21)
Saturday	-0.92 (-1.35 to -0.48)	-1 (-2 to -1)	-0.41 (-0.47 to -0.35)	-622 (-715 to -528)	-0.15 (-0.21 to -0.10)	-110 (-149 to -72)
Lagged residuals L1	0.23 (0.17 to 0.29)	0 (0 to 0)	0.01 (0.01 to 0.01)	20 (17 to 23)	0.01 (0.01 to 0.02)	10 (8 to 12)
Lagged residuals L7			0.00 (0.00 to 0.01)	7 (5 to 10)		
_cons	-0.29 (-1.62 to 1.05)		7.60 (7.40 to 7.80)		6.79 (6.61 to 6.97)	

	Motor Vehicles		Cyclists		Pedestrians	
	IRR (95% CI)	Estimated change (95% CI)	IRR (95% CI)	Estimated change (95% CI)	IRR (95% CI)	Estimated change (95% CI)
<b>Sensor 10</b>						
Trend	0.00 (0.00 to 0.00)	-7 (-10 to -5)	0.00 (0.00 to 0.00)	-2 (-2 to -1)	0.00 (0.00 to 0.00)	0 (0 to 1)
Road closure 2019	0.01 (-0.02 to 0.04)	184 (-266 to 634)	0.03 (-0.03 to 0.08)	42 (-39 to 123)	-0.12 (-0.17 to -0.08)	-172 (-237 to -107)
School holidays	-0.06 (-0.09 to -0.03)	-981 (-1438 to -523)	-0.13 (-0.19 to -0.08)	-201 (-284 to -118)	-0.01 (-0.06 to 0.03)	-18 (-84 to 48)
Road closed to all 2019	-0.01 (-0.07 to 0.06)	-87 (-1154 to 980)	0.03 (-0.09 to 0.16)	53 (-132 to 238)	0.01 (-0.10 to 0.12)	9 (-147 to 164)
Christmas 2020	-0.21 (-0.25 to -0.17)	-3380 (-3962 to -2798)	-0.65 (-0.75 to -0.56)	-990 (-1134 to -845)	-0.35 (-0.42 to -0.29)	-502 (-600 to -404)
Road closure 2020	0.13 (0.08 to 0.18)	2099 (1320 to 2878)	0.05 (-0.06 to 0.16)	79 (-85 to 242)	-0.03 (-0.11 to 0.05)	-47 (-161 to 67)
Road closure 2020 slope	0.00 (0.00 to 0.01)	26 (-43 to 95)	0.00 (-0.01 to 0.01)	2 (-12 to 16)	-0.01 (-0.02 to 0.00)	-12 (-22 to -3)
Restrictions (March 2020)	-0.74 (-0.84 to -0.64)	-11888 (-13455 to -10322)	-0.72 (-0.93 to -0.51)	-1094 (-1416 to -772)	-0.53 (-0.67 to -0.40)	-758 (-951 to -564)
Post-restrictions slope	0.01 (0.01 to 0.01)	157 (116 to 199)	0.01 (0.00 to 0.02)	14 (6 to 23)	0.00 (-0.01 to 0.00)	-5 (-11 to 0)
Post-restrictions slope <sup>2</sup>	0.00 (0.00 to 0.00)	-1 (-1 to 0)	0.00 (0.00 to 0.00)	0 (0 to 0)	0.00 (0.00 to 0.00)	0 (0 to 0)
September 2020	0.02 (-0.04 to 0.08)	330 (-628 to 1288)	0.21 (0.07 to 0.35)	312 (99 to 525)	0.04 (-0.07 to 0.15)	60 (-93 to 213)
Covid cases (per 1000)	0.01 (-0.04 to 0.06)	154 (-579 to 886)	0.05 (-0.06 to 0.15)	71 (-87 to 230)	-0.03 (-0.11 to 0.05)	-43 (-155 to 68)
Covid deaths (per 10,000)	-0.07 (-0.10 to -0.04)	-1160 (-1649 to -671)	-0.06 (-0.13 to 0.01)	-92 (-192 to 8)	0.00 (-0.05 to 0.05)	2 (-66 to 70)
Rainfall (low)	ref	ref	ref	ref	ref	ref
Rainfall (2)	0.01 (-0.01 to 0.02)	82 (-160 to 324)	0.00 (-0.03 to 0.03)	1 (-47 to 50)	0.01 (-0.02 to 0.03)	8 (-28 to 44)
Rainfall (high)	0.01 (-0.01 to 0.02)	86 (-203 to 375)	-0.12 (-0.16 to -0.08)	-180 (-236 to -124)	-0.09 (-0.12 to -0.06)	-125 (-168 to -83)
Temperature (low)	-0.01 (-0.04 to 0.02)	-196 (-639 to 246)	-0.08 (-0.14 to -0.02)	-113 (-200 to -27)	-0.04 (-0.08 to 0.01)	-52 (-116 to 12)
Temperature (2)	0.02 (0.00 to 0.04)	349 (-27 to 725)	-0.06 (-0.12 to -0.01)	-96 (-171 to -21)	0.01 (-0.03 to 0.05)	17 (-36 to 70)
Temperature (3)	ref	ref	ref	ref	ref	ref
Temperature (4)	0.01 (-0.01 to 0.02)	86 (-220 to 392)	0.06 (0.02 to 0.10)	101 (38 to 165)	0.06 (0.03 to 0.09)	82 (36 to 129)
Temperature (high)	-0.01 (-0.04 to 0.02)	-188 (-710 to 335)	0.00 (-0.07 to 0.07)	1 (-104 to 106)	-0.01 (-0.07 to 0.04)	-18 (-96 to 61)
Daylight (hours)	-0.02 (-0.02 to -0.01)	-242 (-319 to -164)	-0.01 (-0.02 to 0.00)	-15 (-31 to 0)	0.03 (0.02 to 0.04)	39 (27 to 50)
Sunday	-0.26 (-0.28 to -0.24)	-3826 (-4175 to -3476)	-0.48 (-0.53 to -0.43)	-645 (-714 to -577)	-0.18 (-0.22 to -0.14)	-233 (-285 to -180)
Monday	-0.04 (-0.06 to -0.01)	-606 (-972 to -240)	-0.02 (-0.07 to 0.02)	-39 (-114 to 37)	-0.01 (-0.04 to 0.03)	-9 (-64 to 45)
Tuesday	ref	ref	ref	ref	ref	ref
Wednesday	0.00 (-0.02 to 0.02)	0 (-368 to 369)	0.01 (-0.03 to 0.06)	23 (-53 to 99)	0.01 (-0.03 to 0.05)	16 (-38 to 71)
Thursday	0.02 (0.00 to 0.04)	342 (-33 to 717)	0.00 (-0.04 to 0.05)	5 (-71 to 82)	0.03 (-0.01 to 0.06)	37 (-18 to 93)
Friday	0.04 (0.02 to 0.07)	735 (357 to 1113)	-0.04 (-0.08 to 0.01)	-65 (-141 to 12)	0.02 (-0.02 to 0.06)	27 (-28 to 82)
Saturday	-0.06 (-0.08 to -0.04)	-1004 (-1370 to -638)	-0.37 (-0.42 to -0.32)	-523 (-593 to -452)	-0.02 (-0.06 to 0.01)	-33 (-88 to 21)
Lagged residuals L1	0.00 (0.00 to 0.00)	70 (60 to 80)	0.01 (0.01 to 0.01)	15 (11 to 18)	0.01 (0.01 to 0.01)	12 (9 to 15)
Lagged residuals L7			0.01 (0.01 to 0.01)	11 (8 to 15)		
_cons	10.10 (10.02 to 10.18)		7.98 (7.81 to 8.15)		7.05 (6.92 to 7.18)	

	Motor Vehicles		Cyclists		Pedestrians	
	IRR (95% CI)	Estimated change (95% CI)	IRR (95% CI)	Estimated change (95% CI)	IRR (95% CI)	Estimated change (95% CI)
<b>Sensor 11</b>						
Trend	0.00 (0.00 to 0.00)	-9 (-12 to -6)	0.00 (0.00 to 0.00)	-4 (-5 to -3)	0.00 (0.00 to 0.00)	0 (-1 to 0)
Road closure 2019	0.13 (0.10 to 0.16)	2106 (1609 to 2603)	-0.06 (-0.12 to 0.00)	-244 (-477 to -11)	0.01 (-0.05 to 0.07)	16 (-93 to 124)
School holidays	-0.07 (-0.10 to -0.04)	-1171 (-1673 to -669)	-0.19 (-0.25 to -0.13)	-749 (-985 to -514)	-0.24 (-0.30 to -0.18)	-416 (-525 to -307)
Road closed to all 2019	-0.01 (-0.08 to 0.07)	-86 (-1226 to 1055)	0.04 (-0.10 to 0.17)	152 (-380 to 684)	0.01 (-0.13 to 0.15)	13 (-228 to 254)
Christmas 2020	-0.27 (-0.31 to -0.23)	-4370 (-5050 to -3690)	-1.00 (-1.11 to -0.90)	-3952 (-4373 to -3532)	-0.91 (-1.01 to -0.81)	-1569 (-1745 to -1393)
Road closure 2020	0.18 (0.12 to 0.25)	2965 (1988 to 3941)	0.09 (-0.03 to 0.21)	356 (-111 to 823)	-0.31 (-0.44 to -0.18)	-537 (-765 to -308)
Road closure 2020 slope	0.00 (-0.01 to 0.00)	-65 (-151 to 22)	-0.01 (-0.02 to 0.00)	-36 (-76 to 4)	-0.02 (-0.03 to -0.01)	-30 (-49 to -11)
Restrictions (March 2020)	-0.95 (-1.07 to -0.82)	-15166 (-17219 to -13113)	-1.02 (-1.26 to -0.78)	-4032 (-4985 to -3079)	-0.96 (-1.18 to -0.75)	-1668 (-2048 to -1289)
Post-restrictions slope	0.01 (0.00 to 0.01)	89 (36 to 141)	0.01 (0.00 to 0.02)	39 (14 to 63)	0.00 (-0.01 to 0.00)	-5 (-16 to 6)
Post-restrictions slope <sup>2</sup>	0.00 (0.00 to 0.00)	0 (0 to 1)	0.00 (0.00 to 0.00)	0 (0 to 0)	0.00 (0.00 to 0.00)	0 (0 to 0)
September 2020	-0.05 (-0.12 to 0.02)	-825 (-1939 to 288)	0.36 (0.21 to 0.51)	1409 (817 to 2002)	0.25 (0.10 to 0.41)	435 (165 to 705)
Covid cases (per 1000)	-0.05 (-0.11 to 0.00)	-836 (-1706 to 34)	0.00 (-0.11 to 0.11)	-10 (-452 to 431)	-0.10 (-0.21 to 0.02)	-166 (-364 to 33)
Covid deaths (per 10,000)	-0.05 (-0.09 to -0.01)	-768 (-1377 to -160)	-0.04 (-0.11 to 0.04)	-143 (-432 to 145)	0.04 (-0.03 to 0.12)	74 (-54 to 201)
Rainfall (low)	ref	ref	ref	ref	ref	ref
Rainfall (2)	0.01 (-0.01 to 0.03)	186 (-93 to 464)	-0.01 (-0.05 to 0.02)	-60 (-192 to 72)	-0.02 (-0.06 to 0.01)	-40 (-100 to 20)
Rainfall (high)	0.02 (0.00 to 0.04)	369 (36 to 702)	-0.14 (-0.18 to -0.10)	-519 (-671 to -367)	-0.15 (-0.19 to -0.11)	-247 (-315 to -178)
Temperature (low)	-0.04 (-0.07 to -0.01)	-593 (-1104 to -83)	-0.10 (-0.16 to -0.04)	-401 (-628 to -174)	-0.04 (-0.10 to 0.02)	-73 (-176 to 31)
Temperature (2)	0.00 (-0.03 to 0.03)	-21 (-461 to 420)	-0.07 (-0.12 to -0.01)	-257 (-460 to -53)	-0.04 (-0.09 to 0.02)	-61 (-153 to 30)
Temperature (3)	ref	ref	ref	ref	ref	ref
Temperature (4)	0.01 (-0.01 to 0.03)	123 (-234 to 481)	0.06 (0.01 to 0.10)	229 (48 to 410)	0.06 (0.01 to 0.11)	108 (25 to 192)
Temperature (high)	0.00 (-0.04 to 0.04)	-16 (-625 to 593)	0.01 (-0.06 to 0.08)	39 (-263 to 342)	-0.04 (-0.12 to 0.04)	-70 (-209 to 70)
Daylight (hours)	-0.02 (-0.03 to -0.02)	-334 (-423 to -245)	-0.04 (-0.05 to -0.03)	-169 (-208 to -129)	-0.04 (-0.05 to -0.03)	-63 (-81 to -46)
Sunday	-0.27 (-0.30 to -0.24)	-3937 (-4339 to -3536)	-0.73 (-0.78 to -0.67)	-2382 (-2564 to -2200)	-0.58 (-0.64 to -0.52)	-857 (-940 to -774)
Monday	-0.04 (-0.07 to -0.01)	-646 (-1067 to -224)	-0.04 (-0.09 to 0.01)	-177 (-386 to 32)	-0.01 (-0.06 to 0.04)	-24 (-117 to 70)
Tuesday	ref	ref	ref	ref	ref	ref
Wednesday	0.00 (-0.02 to 0.03)	39 (-386 to 464)	0.00 (-0.04 to 0.05)	22 (-188 to 231)	-0.01 (-0.06 to 0.04)	-24 (-116 to 69)
Thursday	0.02 (0.00 to 0.05)	383 (-49 to 816)	0.00 (-0.05 to 0.05)	2 (-210 to 215)	0.01 (-0.04 to 0.05)	12 (-83 to 107)
Friday	0.06 (0.04 to 0.09)	1068 (630 to 1506)	-0.05 (-0.09 to 0.00)	-210 (-420 to 1)	-0.02 (-0.07 to 0.03)	-32 (-126 to 63)
Saturday	-0.07 (-0.10 to -0.05)	-1175 (-1596 to -754)	-0.59 (-0.64 to -0.53)	-2046 (-2233 to -1860)	-0.40 (-0.45 to -0.35)	-642 (-728 to -556)
Lagged residuals L1	0.00 (0.00 to 0.01)	80 (70 to 89)	0.01 (0.01 to 0.01)	27 (21 to 32)	0.01 (0.01 to 0.01)	19 (15 to 22)
Lagged residuals L7			0.00 (0.00 to 0.01)	15 (9 to 20)	0.00 (0.00 to 0.01)	7 (3 to 10)
Lagged residuals L14			0.00 (0.00 to 0.00)	12 (6 to 17)	0.00 (0.00 to 0.01)	6 (2 to 9)
_cons	10.21 (10.12 to 10.30)		9.47 (9.30 to 9.63)		8.39 (8.23 to 8.55)	

	Motor Vehicles		Cyclists		Pedestrians	
	IRR (95% CI)	Estimated change (95% CI)	IRR (95% CI)	Estimated change (95% CI)	IRR (95% CI)	Estimated change (95% CI)
<b>Sensor 12</b>						
Trend	0.00 (0.00 to 0.00)	-2 (-4 to 1)	0.00 (0.00 to 0.00)	-1 (-1 to 0)	0.00 (0.00 to 0.00)	0 (-1 to 0)
Road closure 2019	0.04 (0.01 to 0.07)	672 (208 to 1135)	-0.08 (-0.14 to -0.01)	-43 (-79 to -6)	0.14 (0.03 to 0.25)	27 (5 to 49)
School holidays	-0.04 (-0.07 to -0.01)	-668 (-1134 to -203)	0.05 (-0.02 to 0.11)	25 (-12 to 63)	0.08 (-0.03 to 0.19)	17 (-5 to 39)
Road closed to all 2019	-0.01 (-0.08 to 0.06)	-169 (-1251 to 912)	0.04 (-0.11 to 0.20)	24 (-61 to 109)	0.05 (-0.21 to 0.30)	9 (-41 to 59)
Christmas 2020	-0.21 (-0.25 to -0.17)	-3150 (-3751 to -2549)	-0.49 (-0.60 to -0.37)	-270 (-334 to -205)	-0.25 (-0.45 to -0.05)	-50 (-89 to -11)
Road closure 2020	0.06 (0.01 to 0.12)	954 (158 to 1750)	0.08 (-0.03 to 0.20)	46 (-17 to 109)	0.18 (-0.02 to 0.38)	36 (-3 to 75)
Road closure 2020 slope	-0.01 (-0.01 to 0.00)	-107 (-178 to -36)	0.01 (0.00 to 0.02)	5 (-1 to 10)	0.02 (0.00 to 0.04)	4 (1 to 7)
Restrictions (March 2020)	-0.91 (-1.02 to -0.79)	-13758 (-15496 to -12020)	-0.68 (-0.92 to -0.45)	-377 (-507 to -248)	-0.29 (-0.67 to 0.09)	-57 (-132 to 18)
Post-restrictions slope	0.01 (0.00 to 0.01)	116 (72 to 160)	0.02 (0.01 to 0.03)	11 (8 to 15)	0.03 (0.02 to 0.04)	5 (3 to 7)
Post-restrictions slope <sup>2</sup>	0.00 (0.00 to 0.00)	0 (0 to 0)	0.00 (0.00 to 0.00)	0 (0 to 0)	0.00 (0.00 to 0.00)	0 (0 to 0)
September 2020	0.05 (-0.02 to 0.11)	708 (-281 to 1697)	0.09 (-0.09 to 0.26)	48 (-48 to 143)	0.42 (0.13 to 0.71)	83 (25 to 142)
Covid cases (per 1000)	-0.03 (-0.08 to 0.02)	-477 (-1236 to 283)	0.16 (0.04 to 0.29)	89 (20 to 159)	0.33 (0.13 to 0.53)	66 (26 to 106)
Covid deaths (per 10,000)	-0.05 (-0.08 to -0.01)	-741 (-1257 to -226)	-0.07 (-0.14 to 0.01)	-37 (-78 to 4)	-0.14 (-0.26 to -0.02)	-28 (-52 to -5)
Rainfall (low)	ref	ref	ref	ref	ref	ref
Rainfall (2)	0.01 (-0.01 to 0.02)	114 (-140 to 367)	0.01 (-0.02 to 0.05)	8 (-14 to 29)	-0.04 (-0.10 to 0.03)	-8 (-21 to 6)
Rainfall (high)	0.00 (-0.02 to 0.02)	50 (-253 to 354)	-0.14 (-0.19 to -0.10)	-76 (-101 to -51)	-0.27 (-0.36 to -0.19)	-51 (-66 to -36)
Temperature (low)	-0.04 (-0.07 to -0.01)	-570 (-1040 to -100)	-0.14 (-0.21 to -0.07)	-76 (-114 to -38)	-0.14 (-0.27 to -0.01)	-27 (-51 to -3)
Temperature (2)	0.00 (-0.02 to 0.03)	66 (-348 to 480)	-0.07 (-0.13 to -0.01)	-39 (-72 to -6)	-0.02 (-0.12 to 0.07)	-5 (-24 to 14)
Temperature (3)	ref	ref	ref	ref	ref	ref
Temperature (4)	0.01 (-0.01 to 0.03)	151 (-168 to 470)	-0.01 (-0.05 to 0.04)	-4 (-30 to 23)	-0.03 (-0.11 to 0.05)	-6 (-22 to 10)
Temperature (high)	0.01 (-0.03 to 0.04)	131 (-417 to 679)	-0.19 (-0.27 to -0.10)	-98 (-140 to -57)	-0.17 (-0.32 to -0.03)	-33 (-59 to -7)
Daylight (hours)	-0.01 (-0.02 to -0.01)	-174 (-255 to -94)	0.01 (0.00 to 0.02)	6 (-1 to 13)	0.02 (-0.01 to 0.04)	3 (-2 to 8)
Sunday	-0.24 (-0.26 to -0.21)	-3255 (-3616 to -2894)	-0.35 (-0.41 to -0.29)	-182 (-212 to -151)	-0.19 (-0.29 to -0.09)	-37 (-56 to -17)
Monday	-0.01 (-0.04 to 0.01)	-182 (-561 to 197)	-0.04 (-0.10 to 0.01)	-25 (-58 to 8)	-0.06 (-0.15 to 0.04)	-12 (-32 to 8)
Tuesday	ref	ref	ref	ref	ref	ref
Wednesday	0.00 (-0.03 to 0.02)	-11 (-391 to 369)	0.01 (-0.05 to 0.06)	6 (-28 to 39)	0.03 (-0.07 to 0.12)	6 (-15 to 26)
Thursday	0.02 (0.00 to 0.05)	377 (-10 to 764)	-0.02 (-0.07 to 0.04)	-11 (-44 to 23)	-0.05 (-0.15 to 0.05)	-11 (-31 to 10)
Friday	0.07 (0.04 to 0.09)	1101 (709 to 1494)	-0.08 (-0.14 to -0.02)	-47 (-81 to -14)	-0.12 (-0.22 to -0.02)	-25 (-44 to -5)
Saturday	-0.01 (-0.04 to 0.01)	-206 (-588 to 176)	-0.26 (-0.32 to -0.20)	-141 (-172 to -109)	-0.03 (-0.13 to 0.07)	-6 (-26 to 14)
Lagged residuals L1	0.00 (0.00 to 0.01)	70 (61 to 79)	0.01 (0.01 to 0.01)	6 (4 to 8)	0.02 (0.02 to 0.03)	4 (3 to 5)
Lagged residuals L7	0.00 (0.00 to 0.00)	11 (1 to 20)	0.01 (0.01 to 0.01)	5 (3 to 7)		
_cons	9.93 (9.84 to 10.02)		6.63 (6.42 to 6.84)		5.56 (5.16 to 5.97)	

	Motor Vehicles		Cyclists		Pedestrians	
	IRR (95% CI)	Estimated change (95% CI)	IRR (95% CI)	Estimated change (95% CI)	IRR (95% CI)	Estimated change (95% CI)
<b>Sensor 13</b>						
Trend	0.00 (0.00 to 0.00)	-7 (-10 to -4)	0.00 (0.00 to 0.00)	-1 (-1 to 0)	0.00 (0.00 to 0.00)	0 (0 to 0)
Road closure 2019	0.05 (0.01 to 0.08)	720 (201 to 1238)	-0.01 (-0.07 to 0.05)	-6 (-52 to 40)	-0.07 (-0.13 to -0.01)	-46 (-84 to -7)
School holidays	-0.03 (-0.06 to 0.00)	-467 (-992 to 58)	-0.11 (-0.18 to -0.05)	-84 (-131 to -37)	-0.21 (-0.28 to -0.15)	-144 (-185 to -103)
Road closed to all 2019	-0.03 (-0.10 to 0.05)	-431 (-1653 to 791)	0.15 (0.02 to 0.29)	115 (15 to 216)	-0.01 (-0.15 to 0.13)	-6 (-99 to 88)
Christmas 2020	-0.21 (-0.26 to -0.17)	-3341 (-4043 to -2639)	-0.61 (-0.72 to -0.50)	-454 (-538 to -370)	-0.34 (-0.43 to -0.26)	-231 (-290 to -171)
Road closure 2020	-0.02 (-0.08 to 0.04)	-391 (-1336 to 555)	0.00 (-0.11 to 0.11)	2 (-81 to 85)	-0.10 (-0.19 to -0.02)	-69 (-127 to -11)
Road closure 2020 slope	-0.01 (-0.02 to -0.01)	-211 (-295 to -128)	0.01 (0.00 to 0.02)	8 (1 to 15)	-0.02 (-0.03 to -0.01)	-14 (-19 to -9)
Restrictions (March 2020)	-0.70 (-0.81 to -0.58)	-10984 (-12802 to -9165)	-0.37 (-0.56 to -0.17)	-274 (-419 to -129)	-0.26 (-0.42 to -0.11)	-177 (-279 to -76)
Post-restrictions slope	0.00 (0.00 to 0.00)	27 (-22 to 77)	0.01 (0.01 to 0.02)	8 (4 to 12)	0.00 (-0.01 to 0.00)	-3 (-6 to 0)
Post-restrictions slope <sup>2</sup>	0.00 (0.00 to 0.00)	1 (0 to 1)	0.00 (0.00 to 0.00)	0 (0 to 0)	0.00 (0.00 to 0.00)	0 (0 to 0)
September 2020	0.16 (0.09 to 0.24)	2551 (1367 to 3735)	0.28 (0.14 to 0.43)	213 (101 to 324)	0.22 (0.10 to 0.34)	148 (66 to 229)
Covid cases (per 1000)	-0.07 (-0.13 to -0.01)	-1113 (-2006 to -220)	0.07 (-0.04 to 0.18)	51 (-30 to 133)	-0.05 (-0.13 to 0.04)	-31 (-88 to 27)
Covid deaths (per 10,000)	-0.01 (-0.05 to 0.03)	-129 (-713 to 455)	-0.05 (-0.11 to 0.02)	-36 (-85 to 13)	0.03 (-0.03 to 0.08)	17 (-18 to 53)
Rainfall (low)	ref	ref	ref	ref	ref	ref
Rainfall (2)	0.01 (-0.01 to 0.02)	82 (-206 to 371)	0.00 (-0.04 to 0.03)	-3 (-30 to 24)	-0.02 (-0.05 to 0.01)	-14 (-35 to 7)
Rainfall (high)	0.00 (-0.02 to 0.02)	49 (-296 to 394)	-0.17 (-0.21 to -0.12)	-120 (-151 to -89)	-0.14 (-0.18 to -0.10)	-89 (-114 to -65)
Temperature (low)	-0.02 (-0.06 to 0.01)	-374 (-899 to 150)	-0.13 (-0.20 to -0.06)	-94 (-141 to -46)	-0.01 (-0.06 to 0.05)	-4 (-42 to 33)
Temperature (2)	0.02 (-0.01 to 0.05)	283 (-162 to 729)	-0.12 (-0.17 to -0.06)	-87 (-126 to -47)	0.04 (0.00 to 0.08)	28 (-3 to 58)
Temperature (3)	ref	ref	ref	ref	ref	ref
Temperature (4)	0.00 (-0.02 to 0.02)	2 (-365 to 368)	0.05 (0.00 to 0.09)	37 (2 to 71)	0.00 (-0.04 to 0.04)	1 (-24 to 26)
Temperature (high)	-0.08 (-0.12 to -0.04)	-1216 (-1838 to -593)	0.00 (-0.08 to 0.08)	0 (-58 to 58)	-0.11 (-0.18 to -0.04)	-68 (-111 to -26)
Daylight (hours)	-0.01 (-0.01 to 0.00)	-103 (-195 to -11)	0.00 (-0.01 to 0.02)	3 (-6 to 12)	0.04 (0.03 to 0.05)	27 (21 to 34)
Sunday	-0.31 (-0.33 to -0.28)	-4361 (-4776 to -3945)	-0.56 (-0.62 to -0.51)	-367 (-405 to -330)	-0.38 (-0.43 to -0.33)	-232 (-262 to -202)
Monday	-0.02 (-0.05 to 0.01)	-333 (-775 to 108)	-0.03 (-0.08 to 0.02)	-22 (-64 to 20)	-0.03 (-0.08 to 0.01)	-23 (-56 to 9)
Tuesday	ref	ref	ref	ref	ref	ref
Wednesday	-0.01 (-0.03 to 0.02)	-94 (-537 to 348)	0.02 (-0.03 to 0.07)	17 (-25 to 59)	-0.02 (-0.06 to 0.02)	-14 (-46 to 18)
Thursday	0.02 (-0.01 to 0.04)	278 (-172 to 728)	0.01 (-0.04 to 0.06)	8 (-35 to 51)	-0.01 (-0.06 to 0.03)	-10 (-43 to 22)
Friday	0.04 (0.01 to 0.07)	706 (252 to 1160)	-0.05 (-0.10 to 0.00)	-42 (-84 to 1)	-0.03 (-0.07 to 0.02)	-19 (-52 to 13)
Saturday	-0.11 (-0.13 to -0.08)	-1679 (-2114 to -1244)	-0.48 (-0.53 to -0.42)	-323 (-361 to -285)	-0.26 (-0.30 to -0.21)	-166 (-196 to -135)
Lagged residuals L1	0.01 (0.01 to 0.01)	95 (84 to 105)	0.01 (0.01 to 0.02)	9 (7 to 11)	0.02 (0.01 to 0.02)	10 (8 to 13)
Lagged residuals L7			0.01 (0.01 to 0.01)	7 (5 to 10)		
_cons	10.01 (9.91 to 10.10)		7.03 (6.84 to 7.23)		6.19 (6.02 to 6.36)	

IRR – Incident rate ratio; CI – confidence intervals; L – number of days lagged residual, i.e. L1 is a 1-day lagged residual; \_cons – model constant.